



**VVEC**

# POWER CIRCUIT

MARCH 2024 | PUBLISHED FOR THE MEMBERS OF VERDIGRIS VALLEY ELECTRIC COOPERATIVE | A SUPPLEMENT TO OKLAHOMA LIVING | [WWW.VVEC.COM](http://WWW.VVEC.COM)



**SPRING IS HERE!**



## VVEC BOARD OF TRUSTEES

- District 1:** Jim Brackett - 720-4531
- District 2:** Jack Bogart - 371-9587
- District 3:** Vernon Lewis - 521-5461
- District 4:** John Hibdon - 847-2320
- District 5:** Jimmy Lambert - 760-7029
- District 6:** Dennis Lenox - 289-5961
- District 7:** Charles Huerter - 914-1498
- District 8:** Ken Howard - 724-9965
- District 9:** Buddy McCarty - 272-5364

**General Manager:** Alice Lawson

## CONTACT US

**VVEC Headquarters**  
8901 E 146th St N Collinsville, OK

**Mailing address**  
P.O. Box 219, Collinsville, OK 74021

**Phone number**  
918-371-2584 or 1-800-870-5948

**Office hours**  
7:30 a.m. to 4:00 p.m., Mon-Fri

**Power Circuit Editor:**  
Megan Jackson

Power Circuit is published monthly by Verdigris Valley Electric Cooperative, Collinsville, Oklahoma (ISSN 10884378) for its members in Tulsa, Rogers, Washington, Nowata and Osage counties. Periodical postage paid at Tulsa, Oklahoma and other additional mailing offices. Subscription price is \$.19 per month. POSTMASTER: Send address changes to Power Circuit, P.O. Box 219, Collinsville, OK 74021.

**March 2024**  
VOLUME 83 | NUMBER 03



## DATES TO REMEMBER

- 3.01 EMPLOYEE APPRECIATION DAY
- 3.10 DAYLIGHT SAVINGS TIME
- 3.17 HAPPY ST. PATRICK'S DAY!
- 3.19 FIRST DAY OF SPRING
- 3.29 GOOD FRIDAY (OFFICES CLOSED)
- 3.31 HAPPY EASTER!

# TIP OF

☘ ☘ ☘ THE ☘ ☘ ☘

# MONTH

### GIVE YOUR HOME A SPRING CHECK-UP!

#### 1. SMOKE ALARMS

Be sure all smoke alarms are replaced every 10 years. Change batteries twice per year and test per manufacturers directions to ensure proper operation.

#### 2. CHECK GFCI OUTLETS

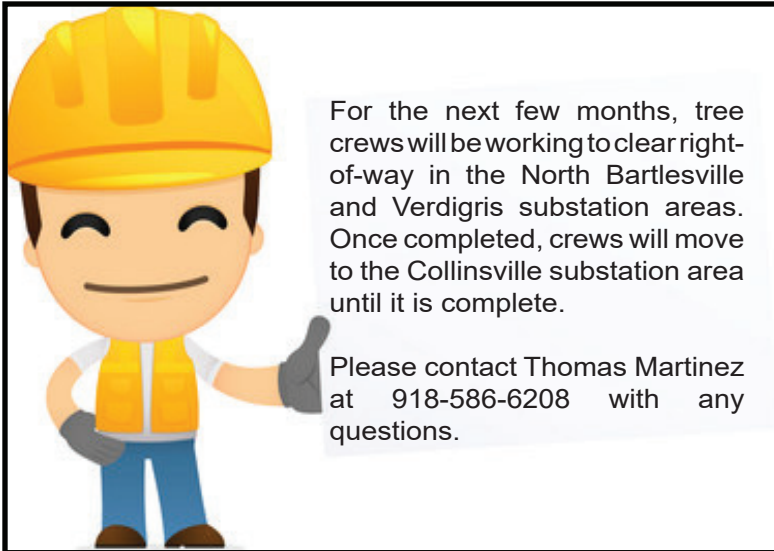
Spring is a great time to check all outdoor and garage outlets for safe operating condition. Clear any debris around outlets and check for any damage, then test all GFCI circuits. To test, press the "test" button in, you should hear a snap sound. The outlet should NOT allow an electrical device to have power while in "test" mode. Simply press the "reset" button to allow the outlet to work again.

#### 3. CHANGE LIGHT BULBS

Change any light bulbs that are broken or not working on the outside of your home. Check your front, back and side porch, patio, motion/security lights and landscape lighting. Always replace bulbs with the proper wattage bulb to prevent overheating and fires.

#### 4. CEILING FANS

For spring and summer, you want airflow to go in a downwards direction for maximum cooling. This means making sure the fan turns in a counterclockwise direction. Check near the center of the fan for a visible switch to change the direction of the fan.



For the next few months, tree crews will be working to clear right-of-way in the North Bartlesville and Verdigris substation areas. Once completed, crews will move to the Collinsville substation area until it is complete.

Please contact Thomas Martinez at 918-586-6208 with any questions.

## HAS YOUR STATUS CHANGED?

If you recently tied the knot, got divorced or were widowed, please let us know so we can update your account. We need up-to-date, accurate information for your capital credit account but also to make it easy for you to conduct business with us.

Federal legislation enacted after Sept. 11, 2001, prevents us from discussing an account with anyone not listed on it.

If you have been widowed, your account will be placed in your name, but we need you to update your application. If your parents or another family member were VVEC members and have passed away, we need to be aware of that because we cannot have an account in the name of a deceased person.

We will be glad to work with you on updating your account! Please call our Office Service Representatives at 918-371-2584.



Pictured: (Top) Arnold holding the framed stock purchased by his father, Elisha. (Right) Arnold and his family around the time they became members with R.E.C.



## LOOKING BACK

Arnold Winfield was six years old in 1947 when his father, Elisha, bought one stock with R.E.C. - Harmon Electric for \$5.00 (about \$70.00 today) in order to gain membership with the cooperative. From there, they installed a single light bulb for their home and later on, they were able to upgrade their ice box to a refrigerator!

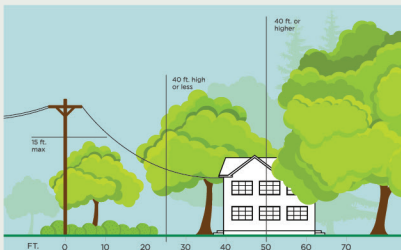
Arnold and his wife, Glenda, did some traveling but have settled back into cooperative life and we are proud to have them as VVEC members!

# 3 Ways to Help Limit Tree Trimming

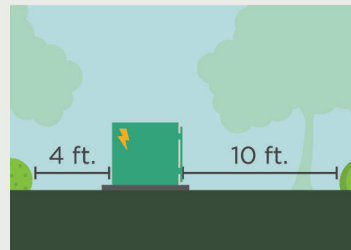
Did you know electric utilities are required to trim trees and other types of vegetation that grow too close to overhead power lines? We know you love your trees, and we will do everything we can to avoid trimming them.

**Here's how you can help:**

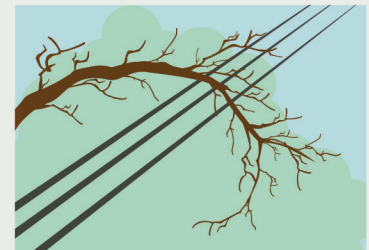
**1. Plant trees in the right place.** Trees that will be <40 ft. should be planted at least 25 ft. away from power lines (>40ft. should be at least 50 ft. away).



**2. Don't block pad-mounted transformers.** Plant shrubs at least 10 ft. away from transformer doors and 4 ft. from transformer sides.



**3. Report dangerous branches.** If you spot a tree or branch that is dangerously close to power lines, please let us know.



**Trimming improves safety for all.**

**Let's work together to enjoy the beauty of trees and reliable electricity.**

## Clearing the Path to Reliability

By Anne Prince

Trees are majestic, beautiful and good for the soul. But we also know that our members depend on us to deliver reliable power to their homes and businesses. That's why Verdigris Valley Electric strives to balance maintaining the beautiful surroundings we all cherish with ensuring reliable electricity. You might not realize it, but there are several benefits to regular tree trimming.

### Reliability

Keeping power lines clear of overgrown vegetation improves service reliability. After all, we've seen the whims of Mother Nature during severe weather events with fallen tree limbs taking down power lines and utility poles. While many factors can impact power disruptions, about half of all outages can be attributed to overgrown vegetation. This is why you sometimes see Verdigris Valley Electric crews or contractors out in the community trimming trees near power lines. Our trimming crews have been trained and certified based on the latest industry standards.

In fact, all U.S. electric utilities are required to trim trees that grow too close to power lines. Scheduled trimming throughout the year keeps lines clear from overgrown or dead limbs that are likely to fall, and we are better able to prepare for severe weather events.

Plus, we all know it's more cost-effective to undertake preventative maintenance than it is to make repairs after the fact. Drone inspections of power lines and vegetation allow us to reduce labor and equipment costs while bolstering reliability. Through the use of small drones, we can accurately monitor the health and growth of trees and identify potential problems.

## Safety

Working near power lines can be dangerous, and we care about your safety and that of our lineworkers. For example, if trees are touching power lines in our members' yards, they can pose a grave danger to families. If children can reach those trees, they can potentially climb into a danger zone. Electricity can arc, or jump, from a power line to a nearby conductor such as a tree.

Any tree or branch that falls across a power line creates a potentially dangerous situation. A proactive approach lessens the chances of fallen trees during severe weather events that make it more complicated and dangerous for lineworkers to restore power.

## Affordability

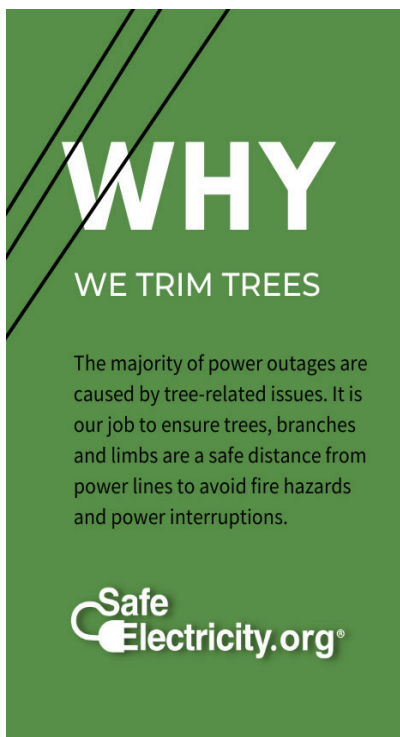
As a co-op, Verdigris Valley Electric always strives to keep costs down for our members. If trees and other vegetation are left unchecked, they can become overgrown and expensive to correct. A strategic vegetation management program helps keep costs down for everyone.

When it comes to vegetation management, there are ways you can help too. When planting new trees, make sure they're planted a safe distance from overhead power lines. Medium-height trees (40 ft. or smaller) should be planted at least 25 ft. from power lines. Taller trees (over 40 ft.) should be planted at least 50 ft. from power lines. You can also practice safe planting near pad-mounted transformers. Plant shrubs at least 10 ft. from the transformer door and 4 ft. from the sides. If your neighborhood has underground lines, remember to contact 811 before you begin any project that requires digging.

Additionally, if you spot an overgrown tree or branch that's dangerously close to overhead lines, please let us know by contacting us at 918-371-2584 or 1-800-870-5948.

We have deep roots in our community, and we love our beautiful surroundings. It takes a balanced approach, and our vegetation management program is a crucial tool in ensuring service reliability.

*Anne Prince writes on consumer and cooperative affairs for the National Rural Electric Cooperative Association, the national trade association representing nearly 900 local electric cooperatives. From growing suburbs to remote farming communities, electric co-ops serve as engines of economic development for 42 million Americans across 56% of the nation's landscape.*



**WHY**

**WE TRIM TREES**

The majority of power outages are caused by tree-related issues. It is our job to ensure trees, branches and limbs are a safe distance from power lines to avoid fire hazards and power interruptions.

**Safe Electricity.org**



HAPPY    
St. Patrick's  
    
Day  

When it comes to electrical safety,

**DON'T RELY  
ON LUCK**



**SET YOUR  
CLOCKS  
FORWARD  
ON 3/10.**

Daylight Saving Time Begins



Flickering lights indicate an electrical problem that needs fixed. Don't take a chance, hire a professional.

 **Safe  
Electricity.org**



**DID YOU  
KNOW?**



[HTTPS://WWW.VVEC.COM/  
CAPITAL-CREDITS](https://www.vvec.com/capital-credits)

**YOU CAN SEARCH FOR LOST MEMBERS ON OUR WEBSITE!**

From time-to-time members move out of VVEC's service territory, get married, or pass away. But Capital Credits still have to be allocated for the energy used. Sometimes VVEC's last known address is not correct and the Capital Credits that are sent out come back to the Cooperative.

We need help to find these former members! We keep a list of "Lost" members on file and you can use the below search field to search for names of people or businesses who we have on file. Anyone who finds his or her name on the Missing Members list, is asked to call us at (918) 371-2584 and give us an address where we can send the check.

# CLASSIFIEDS

**SUBMIT ADS** to [classified@vvec.com](mailto:classified@vvec.com) or send to ATTN: Classified, P.O. Box 219 Collinsville, OK 74021. Ads must be in writing. Your account number, name, address and a phone number is required on all ads. The deadline for all ads is the 1st of the month. Ads submitted by the 1st of the month will run in the following month's newsletter.

*Classified ads are a free service to VVEC members only. As many ads as space allows will be included in each issue. VVEC reserves the right to delete or shorten items or descriptions..*

- Professional, personalized dog grooming at your home. Small dogs only. Most dogs only \$40.00. Over 40 years experience. 918-381-1170
- Tankless propane whole house State hot water heater Model GTS-540-P1H101 \$900. 918-371-6861 Please leave message.
- Billy Goat Lawn Vacuum with hose attachment \$600 Contact 918-637-3314
- 2 adult leather saddles, good condition. \$200 each. Contact 918-899-2638
- 5th Wheel Gooseneck tripod stabilizer \$100 Contact 918-637-3314
- High back dining chairs-like new 4 ivory, 2 brown. \$150 918-371-6861 Please leave message.
- 2 B&L Xchock tire locking chocks \$100 Contact 918-637-3314
- 4 Body Glove Life Jackets very good condition \$100 Contact 918-637-3314



## **DON'T FORGET!**

### Adopt-A-School & Rural Fire Department

Grant season is back for school systems and rural fire departments in our service area! School representatives and fire department personnel may apply to receive funds from these programs and explain how they will use the funds to improve their classroom or fire department.

Once all applications have been reviewed, program personnel will decide how many requests the program can grant! The funds from these grants can help in purchasing items and equipment they may not have been able to acquire otherwise.

Contact Misti Frazier at 918-371-2584 or [mfrazier@vvec.com](mailto:mfrazier@vvec.com) or visit [www.vvec.com](http://www.vvec.com) and go to Community Programs for more information.



**Grant applications are being accepted until  
March 15th, 2024 at 4 P.M.**



**ADOPT-A-SCHOOL  
GRANT PROGRAM**



**RURAL FIRE DEPT.  
GRANT PROGRAM**



# VVEC

## Employee Spotlight

### Inez Wright

This month we are recognizing and celebrating the happy smile you see when you come in our lobby belonging to Inez Wright – 20+ year employee who works at the front counter assisting the members and fellow employees. When she's not wrapped up with her grandchildren and dogs, Inez loves taking trips with her best friend, Sharon Mendell – also a Verdigris Valley Electric employee – and hopes to go to Oregon next! They've been to Mt. Rushmore, the Cheyenne Rodeo and Estes Park, just to name a few! Inez and Sharon met when they worked at a bank a long time ago and they've been best friends ever since, eating lunch and taking their breaks together every day!

Inez loves her job, especially the members. "They are always so friendly, have the cutest jokes and it makes the day fun! You get to know them and they'll tell you stories about their lives. I love visiting with them!", said Inez. The members love her too! If she's not at the front counter, they will notice and you'll hear them asking where she's at. She's even been brought an ice cream cone by a member before! There's no shortage of people who think a lot of Inez – her fellow coworkers have many stories of her orneriness, sass, laughter and how she makes the days enjoyable!

Being at the front desk gives her a nice variety of interaction with members and coworkers and she loves getting to see a lot of people. "When you come to work every morning and there's always someone there to say good morning and give you a big smile, it just sets the tone for the day positively. I look forward to coming to work and I'm proud to be one of VVEC's finest!", said Inez. Congratulations on a job very well done!



**"I enjoy the people that come in, I enjoy the people I work with - you just couldn't ask for a better place to work. They really take care of us!"**

## WINTER RESIDENTIAL RATES

October through March usage;  
November through April billing

**Customer Charge | \$40.00**  
**Energy Charge | \$.08279/kwh**

A power cost adjustment (PCA) will be applied to all bills when the actual cost of power purchased exceeds or is less than 62.088 mills per kwh.

In addition, a gross receipts tax of 2% of revenue will be included, plus additional taxes, if applicable.

*This institution is an equal opportunity provider and employer.*

## IN CASE OF AN OUTAGE

- First, check your fuses or circuit breakers. Every service is different. You may have fuses or circuit breakers in your house, on the side of your house, under your meter, or all three places. Check to see if your neighbors have electricity.
- Then, call the co-op at 371-2584 or 1-800-870-5948. Have your account number, name as it appears on the account, and address handy to give to the dispatcher. If you should get a recording, leave your information; every message will be answered.
- Download the SmartHub app at [www.smarthubapp.com](http://www.smarthubapp.com) to report outages from your smartphone.