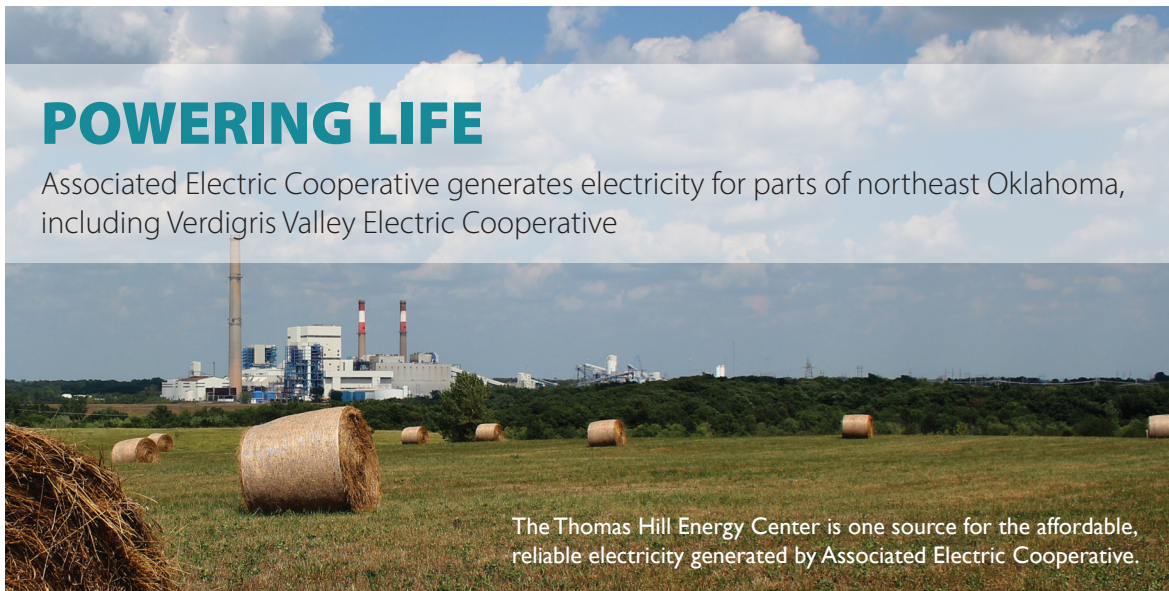


INSIDE THIS EDITION

- 2 | Powering Life, Continued
- 3 | Powering Life, Continued
- 4 | Energy Tip, Recipe & Safe Digging

POWERING LIFE

Associated Electric Cooperative generates electricity for parts of northeast Oklahoma, including Verdigris Valley Electric Cooperative



The Thomas Hill Energy Center is one source for the affordable, reliable electricity generated by Associated Electric Cooperative.

Powering homes, farms and businesses in rural northeast Oklahoma is a point of pride for Associated Electric Cooperative, the generation and transmission cooperative located in Springfield, Missouri. If you are a member of a co-op in northeast Oklahoma, Missouri or southeast Iowa, your electricity comes from Associated's power plants. This cooperative is owned by members like you and serves 2.1 million people. It's controlled through three tiers, including your distribution cooperative, its transmission cooperative and a board including representatives from each level.

"Associated generates power for electric cooperatives in our system with values learned from our member-owners," says Emery "Buster" Geisendorfer, member-elected president of Associated's board of directors. "We know they want reliable, affordable power generated in a responsible

"We know they want reliable, affordable power generated in a responsible way. That's how we view the power we generate—it must meet that reliable, affordable and responsible test."

- Emery "Buster" Geisendorfer

way. That's how we view the power we generate—it must meet that reliable, affordable and responsible test."

A Lewis County Rural Electric Cooperative member, Geisendorfer is a cattleman from Monticello, Missouri. He serves on his local board and is president of Northeast Mis-

Continued on Page 2



FOLLOW VVEC ON FACEBOOK



REPORT OUTAGES ON SMARTHUB

VVEC BOARD OF TRUSTEES

District 1

Jim Brackett, 720-4531

District 2

Jack Bogart, 371-9587

District 3

Vernon Lewis, 521-5461

District 4

John Hibdon, 847-2320

District 5

Jimmy Lambert, 760-7029

District 6

Dennis Lenox, 289-5961

District 7

Charles Huerter, 333-3107

District 8

Ken Howard, 724-9965

District 9

Buddy McCarty, 272-5134
or 272-5364

CONTACT US

General Manager

Alice Lawson

VVEC Headquarters

8901 E. 146th Street N.,
Collinsville

Mailing address

P.O. Box 219, Collinsville, OK
74021

Phone number

918-371-2584 or
1-800-870-5948

Office hours

7:30 a.m. to 4:00 p.m., Mon.-Fri.

Power Circuit Editor

Laura Araujo

Power Circuit is published monthly by Verdigris Valley Electric Cooperative, Collinsville, Oklahoma (ISSN 10884378) for its members in Tulsa, Rogers, Washington, Nowata and Osage counties. Periodical postage paid at Tulsa, Oklahoma and other additional mailing offices. Subscription price is \$0.19 per month.

POSTMASTER - send address changes to Power Circuit, P.O. Box 219, Collinsville, OK 74021.



POWERING LIFE: Continued from Page 1

souri Electric Power Cooperative, a regional transmission co-op. He says the three-tiered system—distribution, transmission and generation—is a key difference in why and how Associated generates power.

“I’m a member, too,” Geisendorfer says. “Those who serve our member-owners at every level of the three-tiered system are focused on members.”

Power when you need it

Providing reliable power expected by members requires different types of generation. Associated’s fleet—producing electricity generated by natural gas, coal, wind and hydropower—is diverse enough to provide power on the hottest, coldest, driest, windiest and calmest days. Natural gas and coal are the most reliable forms of generation because they operate around the clock. They can be controlled unlike power sources that use available wind, sunshine or water to operate. There also are adequate supplies of natural gas and coal, including a 45- to 60-day coal stockpile onsite that

keeps each of the plants running when needed.

Power at a fair price

Electricity is provided to members 24 hours a day, 7 day a week, 365 days a year. As members ramp up their use, Associated’s goal is to ensure reliability, then match members’ needs to the most affordable generation resource.

Coal generation supplied about half of members’ electricity in 2019. Low prices for natural gas have increased the use of this fuel source in Associated’s energy mix, which benefits members. Coal and natural gas are typically less expensive for generation than wind or other renewable sources. Hydropower, the lowest-cost source, is used as much as possible, but is limited in supply by rainfall and is controlled by the U.S Army Corps of Engineers.

Power generated the right way

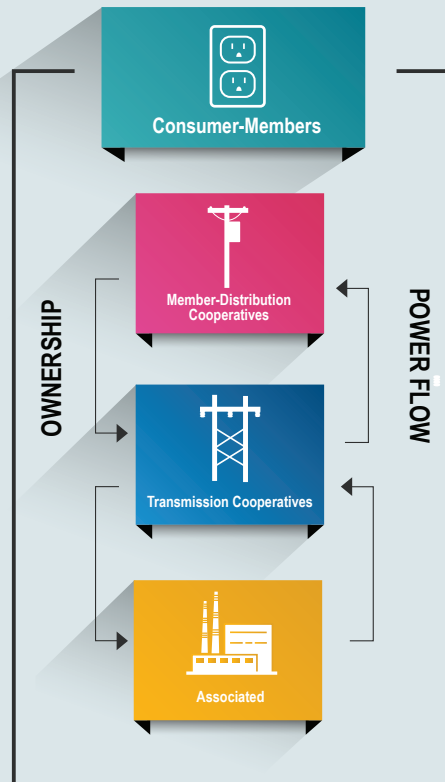
A focus on members drives Associated

to be responsible caretakers of the natural environment. To balance reliable and affordable electricity with environmental responsibility is not easy or inexpensive, but Associated is committed to generating power the right way. Associated and its members have spent more than \$1.1 billion to reduce air emissions since 1994, resulting in more than 70% improvement in air quality. By adding significant amounts of wind power to diversify generating sources, investing in environmental controls and staying up to date with regulations and technologies, Associated complies with environmental regulations at the lowest cost possible for members.

“Having actual end users of its electricity sit on its board of directors makes Associated unique among other generators,” Geisendorfer says. “Balancing reliable and affordable electricity with environmental responsibility takes a steadfast commitment and an allocation of resources. It’s a priority Associated takes seriously. Their experience assures Associated meets the needs of its member-owners. I can’t imagine a better way to run a business that puts service first.” ■

In next month’s issue: Reliability means having electricity available when you flip the switch. We’ll dive deeper into Associated’s ongoing efforts to maintain excellent reliability for members.

Associated Electric Cooperative generates the energy that powers your life



OFFICE CLOSED NOTICE

VVEC offices will be closed Monday, September 7th, in observance of Labor Day.

IN CASE OF AN OUTAGE

- First, check your fuses or circuit breakers. Every service is different. You may have fuses or circuit breakers in your house, on the side of your house, under your meter, or all three places. Check to see if your neighbors have electricity.

- Then, call the Co-op at 371-2584, or 1-800-870-5948. Have your account number, name as it appears on the account, and address handy to give to the dispatcher. If you should get a recording, leave your information; every message will be answered. Or, download the SmartHub app to report outages from your smartphone.

SUMMER RESIDENTIAL RATES

April through September usage,
May through October billing

Customer Charge | \$30.00

Energy Charge

1st 2,000 kWh | \$.08272/kWh

Over 2,000 kWh | \$.08782/kWh

A power cost adjustment (PCA) will be applied to all bills when the actual cost of power purchased exceeds or is less than 59.87 mills per kWh.

In addition, a gross receipts tax of 2% of revenue will be included, plus additional taxes if applicable.

This institution is an equal opportunity provider & employer.

VOLUME 79 | NUMBER 8
AUGUST 2020



VVEC’s headquarters in Collinsville, Oklahoma



Installing a smart power strip is a quick and easy way to start saving money while making your home more energy efficient. Smart power strips can actually cut power off to save energy since they are able to detect when a device is in standby mode.

Source: energy.gov

WALDORF CHICKEN SALAD

SERVES 8

- 3/4 cup fat-free Greek yogurt
- 2 teaspoons Dijon mustard
- 16 ounces chopped, cooked chicken
- 1 cup chopped green apple
- 1 cup blueberries
- 1 cup red grapes, halved
- 1 cup chopped fresh or canned pineapple
- 1/2 cup celery, cut into chunks
- 1 tablespoon freshly chopped mint
- 5-ounce package salad greens
- 1/4 cup chopped pecans or walnuts (optional)

In a medium bowl, combine yogurt and mustard. Stir in chicken, apples, blueberries, grapes, pineapple, celery and mint. Toss to evenly coat. Pour salad greens onto serving platter. Arrange chicken mixture on salad blend and sprinkle with pecans or walnuts, if desired. Can be served as salad or spooned onto tortillas and rolled up for wraps. Amount of yogurt dressing can be adjusted based on personal preference.

5 STEPS FOR SAFE DIGGING

Working on an outdoor project? Careless digging poses a threat to people, pipelines and underground facilities. Always call 8-1-1 first. Here are five easy steps for safe digging:



1. NOTIFY

Call 8-1-1 or make a request online two to three days before your work begins. The operator will notify the utilities affected by your project.

2. WAIT

Wait two to three days for affected utilities to respond to your request. They will send a locator to mark any underground utility lines.



3. CONFIRM

Confirm that all affected utilities have responded to your request by comparing the marks to the list of utilities the 8-1-1 call center notified.



4. RESPECT

Respect the markers provided by the affected utilities. The markers are your guide for the duration of your project.



5. DIG CAREFULLY

If you can't avoid digging near the markers (within 18-24 inches on all sides, depending on state laws), consider moving your project location.



Waldorf Chicken Salad. Recipe and photo courtesy of Dole