

Be Sure to Landscape Away from Electric Lines *p. 4*

## Proposed EPA Regulations Could Increase Electric Bills

Tell the EPA All-But-One Won't Work

"Proposed EPA climate regulations, supported by the White House, will ban new coal-fired generation plants, increasing electric rates by as much as 80-percent, and threatening jobs," says VVEC General Manager Alice Houston. "This will affect everyone, but it could affect co-op members most of all."

Houston explains saying the potential costs of the EPA's greenhouse gas emissions regulations threaten every household and business on a budget, not to mention the ability of electric cooperatives to continue providing reliable and affordable energy.

"These regulations hit hardest on Americans who can least afford to pay the bigger bills, lose their jobs or turn down their heat. And since electric cooperatives serve the majority of the 'persistent poverty' counties in the country we take this seriously.

"This cost increase is unconscionable, and we feel the new power plants'

**1.** 

**ABANDONS ALL-OF-THE ABOVE**  
The Administration is reversing course: ditching our All-of-the-Above energy strategy for an All-But-One approach that bans new coal plants.

**2.** 

**TECHNOLOGY GAMBLE**  
New regulations essentially require technology that's **not commercially viable and prohibitively expensive**—leading to higher bills down the line.

# TOP 4 FACTS

ABOUT THE EPA'S NEW CLIMATE REGULATIONS

**3.** 

**LIMITS ACCESS TO AFFORDABLE, DOMESTIC ENERGY**  
By banning new coal plants, Americans forfeit a **236-year domestic source of energy** with a historically stable price.

**4.** 

**HISTORY REPEATS: ALL-BUT-ONE DOESN'T WORK**  
A 1978 mandate prevented use of natural gas & forced utilities into coal or nuclear—before common sense prevailed and it was repealed 9 years later.

**COOPERATIVE ACTION NETWORK**

**ACTION.COOP**

rule should be immediately withdrawn and reconsidered. So, we need our members to make their voices heard."

Houston urges members to visit [www.action.coop](http://www.action.coop) and send a message to the EPA telling them "America

needs a common sense solution" that balances energy needs and environmental concerns.

**VVEC Board of Trustees**

- District 1 - **Jim Brackett, 720-4531**
- District 2 - **Jack Bogart, 371-9587**
- District 3 - **Vernon Lewis, 341-5225**
- District 4 - **John Hibdon, 847-2320**
- District 5 - **Jimmy Lambert, 760-7029**
- District 6 - **Dennis Lenox, 396-1574**
- District 7 - **Charles Huerter, 333-3107**
- District 8 - **Ken Howard, 724-9965**
- District 9 - **Buddy McCarty, 272-5134**  
or **272-5364**

**General Manager** - Alice Houston

**VVEC Headquarters**

8901 E. 146th Street N., Collinsville

**Mailing address**

P.O. Box 219, Collinsville, OK 74021

**Phone number**

(918) 371-2584 or 1-800-870-5948

**Office hours**

7:30 a.m. to 4:00 p.m.,  
Monday through Friday

**Editor** - Kay Rabbitt-Brower

**Winter Residential Rates**

October through March usage,  
November through April billing

Customer Charge                    \$20.20

**Energy Charge**

1st 1,000 kWh                    \$0.0738/kWh

Over 1,000 kWh                    \$0.0678/kWh

A power cost adjustment (PCA) will be applied to all bills when the actual cost of power purchased exceeds or is less than 55.993 mills per kWh.

In addition, a gross receipts tax of 2% of revenue will be included, plus additional taxes if applicable.



**Representing**

**You**

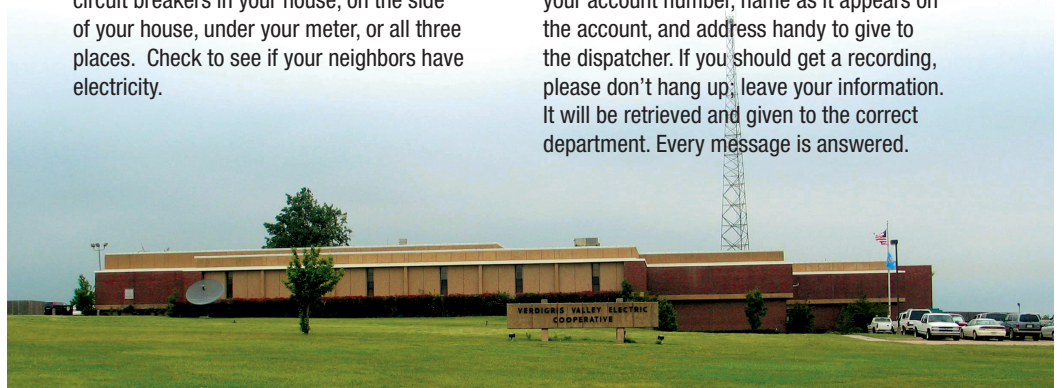
What do co-op trustees and state legislators have in common? You! Recently co-op trustees and other personnel met with area legislators at the “Out of the Gate” reception to discuss matters important to electric co-ops and their members.



Top: VVEC Trustees Vernon Lewis (left) and Jimmy Lambert listen to Rep. Marty Quinn, (R) Claremore (center), while John Hibdon (below left) visits with Rep. Sean Roberts, (R) Hominy.

**What to do if Your Power Goes Off**

1. Check your fuses or circuit breakers. Every service is different. You may have fuses or circuit breakers in your house, on the side of your house, under your meter, or all three places. Check to see if your neighbors have electricity.
2. Call the Co-op at 371-2584, or 1-800-870-5948 if the call is long distance for you. Have your account number, name as it appears on the account, and address handy to give to the dispatcher. If you should get a recording, please don't hang up; leave your information. It will be retrieved and given to the correct department. Every message is answered.



Power Circuit is published monthly by Verdigris Valley Electric Cooperative, Collinsville, Oklahoma (ISSN 10884378) for its members in Tulsa, Rogers, Washington, Nowata and Osage counties. Periodical postage paid at Tulsa, Oklahoma and other additional mailing offices. Subscription price is \$0.19 per month. POSTMASTER - send address changes to Power Circuit, P.O. Box 219, Collinsville, OK 74021.

VOLUME 73 • NUMBER 3 • MARCH 2014

# Visit Us at the Greater Tulsa Home & Garden Show

Spring arrives this month, and if you are eager to start making improvements to your home and yard, you will want to visit the Greater Tulsa Home & Garden Show March 6 -9. The annual show is at the Riverspirit Expo at Tulsa's Expo Square.

Members of VVEC's Member Services department, along with their counter-parts from other Northeastern Oklahoma electric co-ops, will be manning the Green Country Electric Cooperative booth at the show. The booth is located on the building's upper level.

We have information on energy efficiency, and you can register to win a patio swing. So drop by and say hello!

## Youth Tour and Energy Camp Essays Due March 7

Just a reminder to those students writing essays for VVEC's Youth Tour and Energy Camp programs: The essays need to be submitted to VVEC no later than 4 p.m. Friday, March 7.

"High school juniors wanting to take the Youth Tour test have until Monday, March 31, but they need to submit their entry form to me as soon as possible so we can schedule a time for me to administer the test," says VVEC Youth Programs Coordinator Kay Rabbitt-Brower.

Youth Tour is an all expense-paid trip to Washington, D. C. in June. It is aimed at high school juniors. Those who are interested in competing can write an essay or take a test.

Energy Camp is a four-day camp at Canyon Camp near Hinton for 8th graders. Interested students can write an essay as individual students or as two-person teams. School counselors have information packets on both of these programs, and it can also be found on VVEC's Web site, [www.vvec.com](http://www.vvec.com).

## Appliances Need Breathing Room

If your microwave oven, refrigerator, TV and decorative lamps are too close together, they could overheat, cause a fire or die an early death.

The problem: Even appliances need breathing room. Space your heat-generating appliances far enough away from each other that

air can easily circulate between them.

Also: Don't cover them with decorative sleeves or even with knick-knacks. Avoid storing cloth, paper or plastic items on top of the refrigerator, microwave or another appliance that produces heat.



### Invest in Efficiency

The benefits of some home efficiency investments aren't seen as quickly as others. Here's how a few upgrades compare over time:



**Set Water Heater to 120°**  
No Cost; Save \$73/yr

**Open Window Blinds in Winter; Close in Summer**  
No Cost; Save \$35/yr

**Adjust Thermostat 1° Down in Winter, 1° Up in Summer**  
No Cost; Save \$82/yr



**ENERGY STAR Clothes Washer**  
Costs \$194 extra; Save \$140/yr

**ENERGY STAR Refrigerator**  
Costs \$97 extra; Save \$100/yr

**Wrap Hot Water Tank**  
Costs \$85; Save \$23/yr

**Upgrade to ENERGY STAR Heat Pump (From 10 to 15 SEER)**  
Costs \$5,700; Save \$408/yr

Instant Benefit

1-5 Year Payback

Long Term Investment

Find more ways to save at **TogetherWeSave.com.**

*Source: U.S. Department of Energy Home Energy Saver, Touchstone Energy® Cooperatives. Based on national average savings; actual savings will vary by climate.*

# Look Up

## When Planting Trees and Landscaping Around Your Home

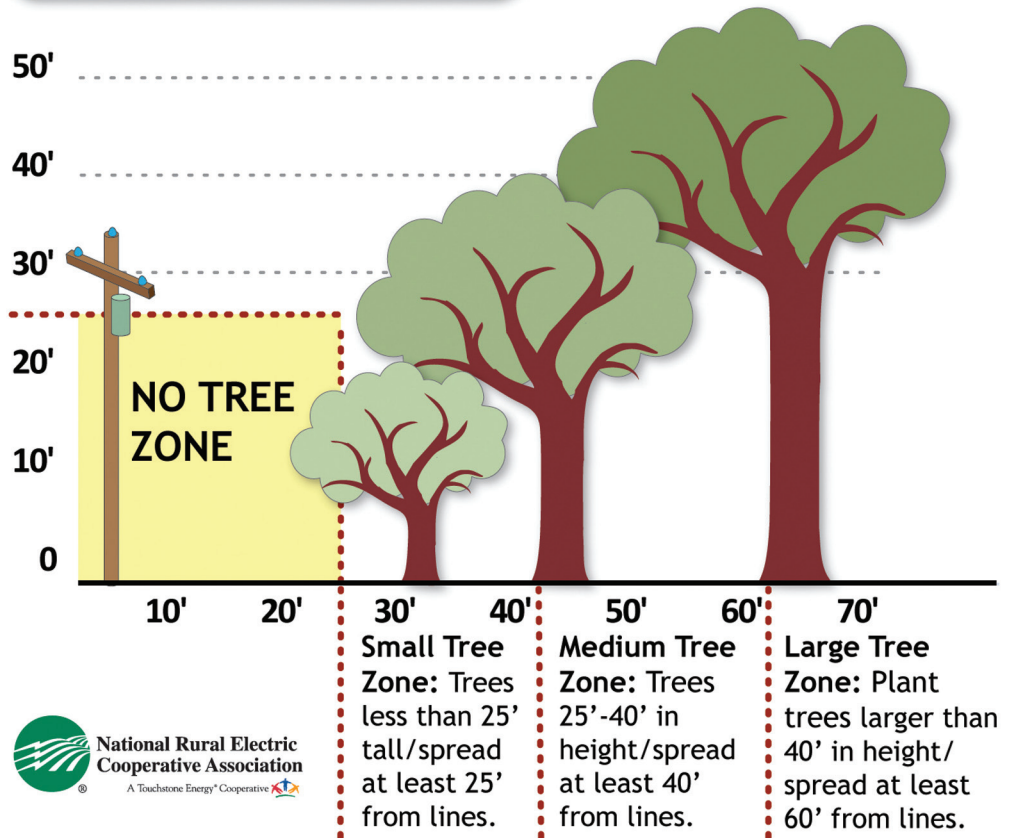
Landscaping can make your home attractive, but you want to think ahead when planting trees.

Not only do you not want to plant anything directly under power lines, you also want to think about where the tree's branches will be as it matures.

This graphic can help you decide where to plant your trees so they won't grow into the power lines.

Planting them far enough away will keep them from interrupting your electric service and from us having to trim the branches, or even remove the tree in the future.

### Tree Planting Guide



#### RECIPE

### Bacon-Cheddar Mashed Potatoes

- 1-1/2 lb. red potatoes (about 4), quartered
- 1/2 cup MIRACLE WHIP Dressing
- 4 slices bacon, cooked, crumbled
- 1/4 tsp. garlic powder
- 1/8 tsp. pepper
- 1/2 cup shredded mild Cheddar cheese (sharp Cheddar cheese can be used, if desired)

Cook potatoes in large saucepan of boiling water 20 min. or until tender; drain.

Mash potatoes. Add dressing, bacon, garlic powder and pepper; beat until fluffy.

Stir in cheese.