

**Employee Shares Talent and Hobby with Local Athletes p. 4**

## Winter Storms: *Prepare for the Worst*

The devastating ice storm of 2007 is still a clear, but not pleasant, memory for both VVEC members and employees. With the exception of the blizzard in February 2011, we have enjoyed few bouts of outage-causing severe weather.

While we count our blessings, we also believe readiness is always wise. Here are a few tips to bear in mind:

1. Create a weather emergency plan for your family.
2. Fill a backpack or a cooler with a couple of days' worth of food and water. Toss in a flashlight, a portable radio, a first-aid kit, some cash and your medicine.
3. Before bad weather starts, turn off your water heater, stove and air conditioning units. Unplug TVs, stereos, the microwave oven and computers.
4. Leave one light switch on so you will know when the power is restored.
5. Keep extra batteries in multiple sizes on hand.
6. Stay far away from fallen power lines and flooded streets.
7. Teach youngsters about the dangers of mixing water and electricity.
8. Hook-up generators correctly, and let us know you are using one.

Finally, remember VVEC employees are working in extremely dangerous and difficult conditions. Your patience and cooperation are always greatly appreciated.

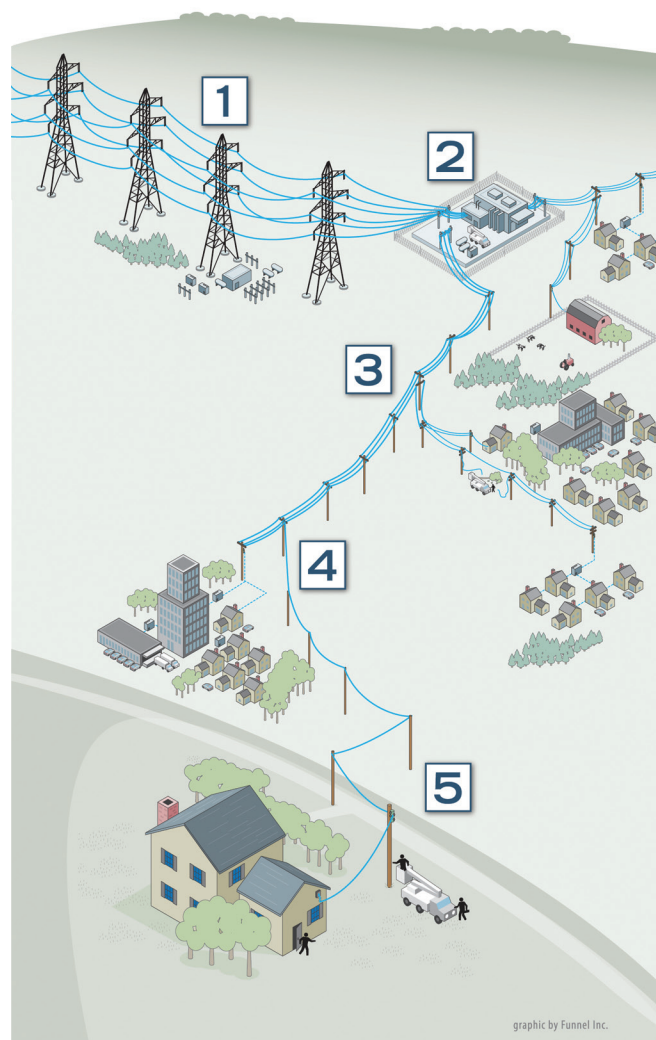
## Powering Up

When electricity goes out, most of us expect power will be restored within a few hours. But when a major storm causes widespread damage, longer outages may result. Co-op line crews work long, hard hours to restore service safe to the greatest number of consumers in the shortest time possible. Here's what's going on if you find yourself in the dark.

## Powering UP

When electricity goes out, most of us expect power will be restored within a few hours. But when a major storm causes widespread damage, longer outages may result. Co-op line crews work long, hard hours to restore service safely to the greatest number of consumers in the shortest time possible.

**Here's what's going on if you find yourself in the dark.**



### 1 High-Voltage Transmission Lines

Transmission towers and cables that supply power to transmission substations (and thousands of members) rarely fail. But when damaged, these facilities must be repaired before other parts of the system can operate.

### 2 Distribution Substation

Each substation serves hundreds or thousands of consumers. When a major outage occurs, line crews inspect substations to determine if problems stem from transmission lines feeding into the substation, the substation itself, or if problems exist down the line.

### 3 Main Distribution Lines

If the problem cannot be isolated at a distribution substation, distribution lines are checked. These lines carry power to large groups of consumers in communities or housing developments.

### 4 Tap Lines

If local outages persist, supply lines, called tap lines, are inspected. These lines deliver power to transformers, either mounted on poles or placed on pads for underground service, outside businesses, schools and homes.

### 5 Individual Homes

If your home remains without power, the service line between a transformer and your residence may need to be repaired. Always call to report an outage to help line crews isolate local issues.

**VVEC Board of Trustees**

- District 1 - **Jim Brackett, 720-4531**
- District 2 - **Jack Bogart, 371-9587**
- District 3 - **Vernon Lewis, 341-5225**
- District 4 - **John Hibdon, 847-2320**
- District 5 - **Jimmy Lambert, 760-7029**
- District 6 - **Dennis Lenox, 396-1574**
- District 7 - **Charles Huerter, 333-3107**
- District 8 - **Ken Howard, 371-4833**
- District 9 - **Buddy McCarty, 272-5134 or 272-5364**

**General Manager** - Alice Houston

**VVEC Headquarters**

8901 E. 146th Street N., Collinsville

**Mailing address**

P.O. Box 219, Collinsville, OK 74021

**Phone number**

(918) 371-2584 or 1-800-870-5948

**Office hours**

7:30 a.m. to 4:00 p.m.,  
Monday through Friday

**Editor** - Kay Rabbitt-Brower

VVEC offices will be closed **Friday, March 29** for Good Friday. Service personnel will be on call should you experience an outage. Call 371-2584, or 1-800-870-5948 to report an interruption in service.

**Winter Residential Rates**

October through March usage,  
November through April billing

Customer Charge                      \$20.20

**Energy Charge**

1st 1,000 kWh                      \$0.0738/kWh

Over 1,000 kWh                      \$0.0678/kWh

A power cost adjustment (PCA) will be applied to all bills when the actual cost of power purchased exceeds or is less than 55.993 mills per kWh.

In addition, a gross receipts tax of 2% of revenue will be included, plus additional taxes if applicable.



Meeting with Sen. Rick Brinkley (center) are (left to right) VVEC Trustees John Hibdon, Jimmy Lambert, and Ken Howard, along with VVEC Director of Operations Mike Hall.

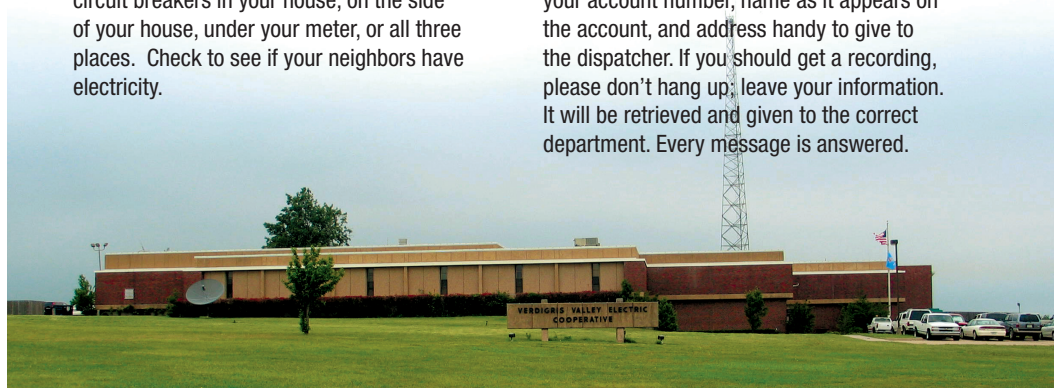
**Representing Members at the Capitol**

Keeping the concerns of VVEC members before state legislators is one of the most important responsibilities of being a VVEC trustee.

At the beginning of the legislative session, trustees and members of VVEC’s management team met with area legislators at a reception in their honor at the Cowboy Hall of Fame in Oklahoma City. The Oklahoma Association of Electric Cooperatives hosted the event. The co-op delegation discussed the effects of possible legislation on co-op members, and served as an informational resource to the legislators.

**What to do if Your Power Goes Off**

1. Check your fuses or circuit breakers. Every service is different. You may have fuses or circuit breakers in your house, on the side of your house, under your meter, or all three places. Check to see if your neighbors have electricity.
2. Call the Co-op at 371-2584, or 1-800-870-5948 if the call is long distance for you. Have your account number, name as it appears on the account, and address handy to give to the dispatcher. If you should get a recording, please don’t hang up; leave your information. It will be retrieved and given to the correct department. Every message is answered.



Power Circuit is published monthly by Verdigris Valley Electric Cooperative, Collinsville, Oklahoma (ISSN 10884378) for its members in Tulsa, Rogers, Washington, Nowata and Osage counties. Periodical postage paid at Tulsa, Oklahoma and other additional mailing offices. Subscription price is \$0.19 per month. POSTMASTER - send address changes to Power Circuit, P.O. Box 219, Collinsville, OK 74021.

VOLUME 72 • NUMBER 3 • MARCH 2013





Lisa McBride (left) and Kassidy Murphy

## Two Employees Join Co-op Family

With the new year came two new faces at VVEC. Lisa McBride and Kassidy Murphy joined the VVEC family in January, and both are in the office services department.

Lisa is the data processing clerk and consumer services representative, while Kassidy is a consumer services representative. Plans call for Lisa to float between the data processing and consumer services areas as needed.

Lisa comes to VVEC from the Hard Rock Casino where she was the main cage vault cashier for over eight years. She is a graduate of Claremore High School and attended Rogers State College.

Lisa and her husband Gary have been married for 13 years. They enjoy three daughters from Gary's previous marriage: Alicia, Cassie, and Kayla. They also have a 14-month-old granddaughter, and are looking forward to the arrival of twin grandchildren this summer.

Kassidy is a graduate of Collinsville High School. Prior to joining VVEC's workforce, she was a dental assistant at Community Care, an intern at Knox Inspection, took International Business courses at TCC, and was a stay-at-home mom.

She has a 20-month-old son Jace.

Kassidy played competitive softball for 14 years, some of those on a team coached by VVEC employee Keith DeLozier and his wife Missy, and on a team in Tulsa. She played center field.

Now she helps coach the 16-and-under team her sister plays on, and is looking forward to the team competing in a 4th of July tournament in Colorado.



Use your Co-op Connections Card for discounts or special deals at area businesses. Visit [www.VVEC.com](http://www.VVEC.com) for a list of those participating businesses.

## Avoid Power Lines during Spring Chores

Whether you're pruning a tree, installing an antenna or operating farm equipment, steer clear of overhead power lines.

Contact with a live wire can damage your equipment. If you're touching that equipment when it makes that contact, it can seriously injure or even kill you.

- If it looks like you or your equipment will come within 15 feet of any power line, make a new plan. Any closer is too close for safety.

- Assume any wire you see is a live electrical line. Do not assume the wire is a telephone or cable line. Call VVEC to make absolutely sure. Do not touch a branch if it is touching a wire. If the wire breaks, assume it is energized and can injure or kill you. Report the problem to us and keep everyone away from it until help arrives.

- If you're using a ladder, keep it far enough away from all power lines that it won't touch one if it falls over. The Consumer Product Safety Commission reports that ladders contacting power lines cause 9 percent of electrocutions each year.

- Take the day off if it rains. Climbing ladders and working with big equipment in bad weather is an invitation for you to lose your footing and knock something – or yourself – into a power line.

# Employee Generous with his Hobby, Talents

VVEC Field Engineer Keith DeLozier is generous with his time and talents. Keith recently finished making and installing 24 wooden lockers for the girls' volleyball and basketball locker rooms at Collinsville High School.

The lockers are made of oak, and are designed so they can be locked; something that couldn't be done with the previous lockers.

"The school bought some of the wood, and some was donated by Kyle Smalygo of Smalygo Properties," says Keith.

With the help of Jerry, his dad, Keith stained the lockers, and his wife Missy painted the Collinsville Cardinals for the doors.

"The girls seem to love them. Several have come up and said 'thanks'," he says smiling.

Wood-working is a hobby for Keith, one he learned from his Dad while 'messaging around in the garage." He makes a variety of things



Keith with the lockers he made for Collinsville High School, and a CHS bus (inset.)

from fireplace mantels to game boards, baby beds and high chairs to cars and school buses. He has given several away as gifts, and has even

donated one of his vehicles to a local booster club to be auctioned off as a fund-raiser.



## RECIPE

### Irish Shamrock Cookies

- 1/2 cup butter, softened
- 1 (3-oz.) pkg. instant pistachio pudding mix
- 1 1/3 cups baking mix such as Bisquick
- 1 egg
- 1 Tbsp. white sugar

Preheat oven to 350°. Lightly grease baking sheet.

Cream together the butter or margarine and the pudding mix. Blend in the baking mix, egg and sugar and mix well.

On a lightly floured surface roll out the dough to 3/8-inch thickness and cut into cookies with a shamrock cookie cutter.

Place cookies on the prepared baking sheet and bake at 350° for 9 to 10 minutes or until lightly browned on the edges. Let cookies cool on rack. Frost with green colored icing if desired.