

VVEC Trustee Assumes KAMO Power Board Leadership

In this Issue...

- Page 2** – Calendar of Events
- Page 3** – Meet New District 5 Trustee
- Page 4** – Adopt-a-School Grants
- Page 5** – Start the Dialogue with Legislators
- Page 6** – New Substation in Oologah Area
- Page 7** – Vidalia Onion Recipes
- Pages 8 - 11** – Classified Ads
- Page 12** – Get Dad a Great MECO Grill for Father's Day

KAMO Power's newest president of the board has an easy-going manner and can discuss hog production as adeptly as he can discuss wind generation. Carl Long brings a great deal of knowledge and experience to the generation and transmission co-op's governing board at a time when both are needed.

Long, a retired country extension agent who has served as VVEC district 1 trustee for 14 years, assumed the president's duties at KAMO Power's annual meeting in early May. Although this is his first time to serve as president, he has been secretary and vice-president.

KAMO Power is a generation and transmission cooperative, headquartered in Vinita. It provides wholesale electric service to VVEC and 16 other distribution co-ops in Oklahoma and Missouri. Collectively, these 17 distribution cooperatives are member-owners of KAMO Power and supply electricity to some 323,500 consumers.

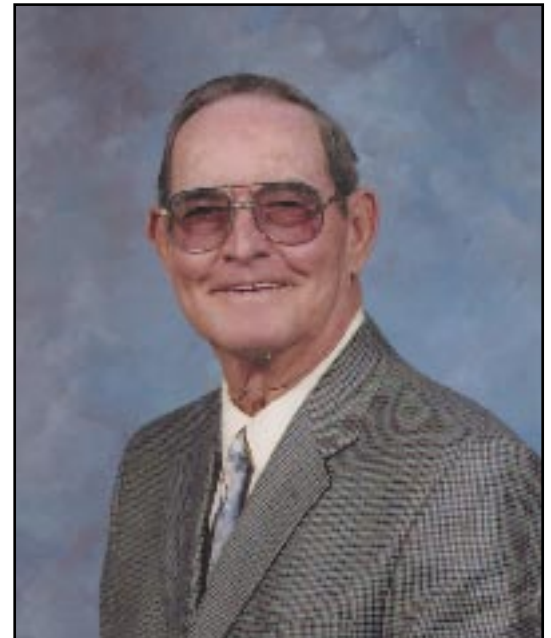
In 2007, KAMO Power delivered 6,035,000 megaWatt-hours of energy to its member-owners. Total 2007 energy sales were \$241.6 million, and at the end of the year KAMO Power's assets as depreciated were \$315.7 million.

When asked if now is a good time to be president, he smiles and says, "Well, yes and no.

"There are many challenges ahead of us and we're going to have to be knowledgeable and work together as we face them," he says.

"One of the biggest challenges is being able to provide adequate electricity. There are so many factors that affect electric generation right now."

Issues involving commodities such as coal, natural gas, petroleum products and carbon dioxide (CO₂) emissions are affecting the upper levels of the electric cooperative hierarchy.



Carl Long

*President, KAMO POWER
 Board of Directors
 VVEC Trustee*

"The price of coal has increased dramatically," he says. "I don't think anyone knew it was going to go up that much. And the cost associated with delivering that coal to generation plants is increasing. Legislators on the national level are looking at what can be done about that, and NRECA (National Rural Electric Cooperative Association) is working for us on the national level. AECI (Associated Electric Cooperative, Inc.) has a good relationship with those who deliver coal to

Continued on page 6.

Calendar of Events

June 14 **Flag Day**

June 15 **Father's Day**

June 20 **First Day of Summer**

July 4 **Independence Day** – VVEC offices will be closed.

Owasso Farmers' Market – Wednesdays and Saturdays,
8 a.m. to 12 p.m., Owasso YMCA.

If you have an event you would like to appear in the calendar, send written information to Power Circuit Editor, P.O. Box 219, Collinsville, OK 74021. Include the date(s), time, location, and a telephone number. Information must be received by the 10th of the month preceding the event.

VVEC Board of Directors

District 1 - Carl Long, 273-2555
District 2 - Jack Bogart, 371-9587
District 3 - Vernon Lewis, 341-5225
District 4 - John Hibdon, 847-2320
District 5 - Jimmy Lambert, 342-4662
District 6 - Dennis Lenox, 396-1574
District 7 - Charles Huerter, 333-3107
District 8 - Ken Howard, 371-4833
District 9 - Buddy McCarty, 272-5134 or 272-5364

General Manager - Alice Houston

VVEC Headquarters - **8901 E. 146th Street N., Collinsville**

Mailing address - **P.O. Box 219, Collinsville, OK 74021**

Phone number - **(918) 371-2584 or 1-800-870-5948**

Office hours - **7:30 a. m. to 4:00 p. m., Monday through Friday**

Visit us on the Internet at:

www.vvec.com

www.vvec.coop

What to do if Your Power Goes Off

1. Check your fuses or circuit breakers. Every service is different. You may have fuses or circuit breakers in your house, on the side of your house, under your meter, or all three places. Check to see if your neighbors have electricity.
2. Call the Co-op at 371-2584, or 1-800-870-5948 if the call is long distance for you. Have your account number, name as it appears on the account, and address handy to give to the dispatcher. If you should get a recording, please don't hang up; leave your information. It will be retrieved and given to the correct department. Every message is answered.

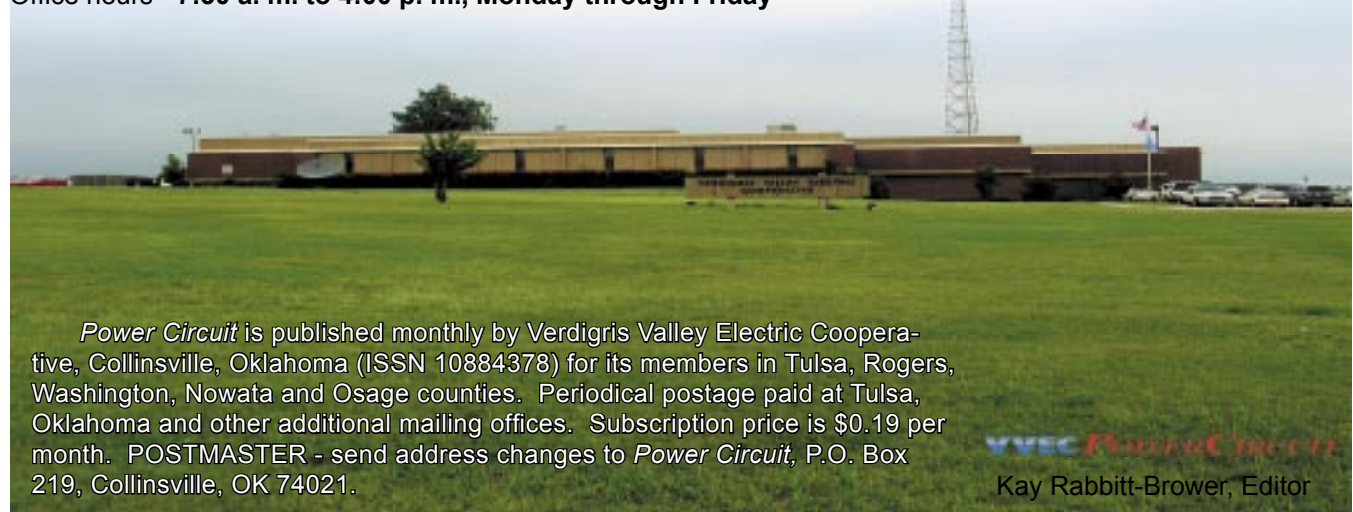
Summer Residential Rates

May through October usage,
April through November billing

Consumer Charge \$12.00

All kWhs \$0.0667 cents/kWh

A power cost adjustment (PCA) is applied monthly to all bills when the average cost of power the cooperative buys is less than or more than 40.00 mills/kWh.



Power Circuit is published monthly by Verdigris Valley Electric Cooperative, Collinsville, Oklahoma (ISSN 10884378) for its members in Tulsa, Rogers, Washington, Nowata and Osage counties. Periodical postage paid at Tulsa, Oklahoma and other additional mailing offices. Subscription price is \$0.19 per month. POSTMASTER - send address changes to *Power Circuit*, P.O. Box 219, Collinsville, OK 74021.

VVEC **Power Circuit**

Kay Rabbitt-Brower, Editor



Jimmy Lambert
New District 5 Trustee

Lambert is New District 5 Trustee

There will be a new face at the June trustee meeting. Collinsville businessman Jimmy Lambert has been appointed to fill the vacancy created by the death of long-time board member Ken Easterling.

A graduate of Owasso High School, Lambert and his brother Mike own Lambert's Auto Salvage in Collinsville, which they bought from their father a few years ago. Although he's worked at the business most of his life, he was a Collinsville fire fighter for two years and operated Affordable Auto Parts in Vera.

He and his wife Melissa have been married for 18 years and are parents to sons Trey, 15, Cole, 11 and Austin, 9. Trey attends Sequoyah High School, while Cole and Austin go to school at Justus-Tiawah.

The Lamberts have lived in Tiawah for the past 13 years. When Lambert isn't working, he and Melissa attend their sons' athletic events and spend time with their sons.

"I have a lot to learn as a trustee, but I look forward to helping the members of my district in any way I can. I'm also looking forward to meeting the other trustees and getting to work with them," he says.


He encourages district 5 members to call him at 342-4662 if he can help them.



**VVEC offices will be closed
Friday, July 4
in observance of Independence Day.**

Please call 371-2584 or 1-800-870-5948
to report an outage.

Have a Safe and Happy Holiday Weekend!



Adopt-a-School Program Helps Area Schools Buy Much-Needed Equipment, Teaching Materials

Although four area schools are the recipients of VVEC's Adopt-a-School grants, students attending those schools are the true beneficiaries.

The grants allow the schools to purchase everything from T-shirts and awards to computers and science equipment.

The 423 students at Foyil Elementary School will benefit from advanced technology with the portable projector, laptop computer and SMART board the school was able to purchase with the Adopt-a-School grant.

The projector can be connected to a computer monitor and project onto a large screen or wall. The SMART board is an interactive computer monitor that allows students and teachers to utilize virtual programs. The laptop computer can be used with both of these devices.

Cindy Garrett's Pre-K students at Jane Phillips Elementary School in Bartlesville will enjoy a language center designed to expand their reading and writing practices. According to Garrett, writing materials are well-organized and within easy reach on one side of the center while a listening center and/or traditional reading can take place on the other side.

Three hundred and twenty students attend the school.

Bowring Superintendent Nicole Hinkle is teaming with the Boy Scouts of America (BSA) to teach "Learning for Life" curriculum to the system's elementary and junior high students. With VVEC's Adopt-a-School grant two students will be recognized with an award and T-shirt once a week for demonstrating respect, teamwork, and other life skills learned through the BSA

program.

Students at Claremont Elementary School, Claremore, will learn through hands-on programs that teach them about electricity, the workings of gears, and the universe, and the human body. Science Lab teacher Cindy Ramsey says these materials will be used by the more than 600 kindergartners through 4th graders.

Each year area schools are invited to submit applications for needed resources or equipment through the Adopt-a-School program. The applications are then reviewed and the grants awarded.

"To educate a child is to give him or her freedom," says VVEC General Manager Alice Houston. "We're proud to partner with our area schools and play a part in providing a quality education to our area's young people."

Technology is Key to Keeping the Lights on

Right now, there are a lot of “what-ifs” surrounding electric power. As a nation, we need to add more generating resources to meet growing electric consumption.

As your provider of safe, affordable, and reliable power, it’s our job to make prudent, long-term energy decisions that will benefit you and the communities we serve for decades to come. But today those decisions are mixed up with politics like never before. Every question of supplying power is being impacted by the debate surrounding how best to meet climate change goals. Policy limiting carbon dioxide emissions is becoming more likely, although specifics are still up in the air.

Massive investments in new

technology will be required –and soon – to find a balance in meeting both our energy and climate change goals. The Electric Power Research Institute estimates it will take a research investment of \$1.4 billion a year from now until 2030 to develop new technology such as carbon capture and storage for our power plants.

Once we add this advanced technology to the equation, we can develop power plants that burn coal and isolate carbon dioxide emissions. The gas can then be compressed and pumped for permanent storage deep underground. Many experts believe that with the right financial commitment from the federal government, cost-effective carbon capture and storage tech-

nology could become commercially available around 2020.

But this is just one potential piece of the puzzle, and until our elected officials agree to increase the necessary funding, uncertainty remains.

At Verdigris Valley Electric, we are dedicated to keeping you supplied with reliable and affordable electricity. We are, with electric cooperatives across the country, engaged in a grassroots campaign called “Our Energy, Our Future” to start a dialogue with lawmakers about critical questions such as technology’s role in our energy future.

Start the Dialogue

Verdigris Valley Electric Cooperative has joined the nationwide co-op campaign to make Congressional delegates and other elected officials aware of how certain issues could impact rural consumers. While climate change legislation and renewable energy research are important topics that deserve attention, electric co-ops want to be sure legislative decisions surrounding these issues will not increase rates for co-op members. Your help is needed.

Please visit ourenergy.coop to start the dialogue with your elected officials. Be sure to ask your elected officials these questions:

- **What is your plan to make sure we have enough electricity in the future?**
- **What are you doing to fund the research to make emission-free electric plants affordable?**
- **How much is this going to increase my electric bill, and what will you do to make sure it is affordable?**



Know Someone on ‘The List?’

A list of members who have not collected their Capital Credits can now be found on our Web site – www.vvec.com. Click on ‘Capital Credits’ under the ‘About VVEC’ drop-down menu. Type in the name of a missing member to see if he or she has unclaimed Capital Credits.

Frequently, members don’t give us a forwarding address when they move off of co-op lines, so we don’t know where to send their Capital Credit checks.

If you know a former member, please encourage him or her to visit the Web site to see if their name is on the list. Or call us if you have information on how to reach someone on the list.

Carl Long...

Continued from page 1.

our coal-fired plants, so we don't have some of the problems other utilities have."

Long goes on to say the price of natural gas is three or four times as high as it was in 2005.

He adds environmental concerns have a strong impact on electric utilities today.

"We're waiting to find out what is going to happen with the carbon tax. Will it be applied? We don't know. Legislation is being discussed right now, and might possibly be passed next year.

"We have representatives at every level of government working with legislators to make our concerns known."

Long became interested in commodities and their affect on the electric utilities as he was recuperating from surgery last year.

"We were in a bull market in 2000. It usually goes in a 15 to 20 year cycle, which means we could be in the middle of one right now. If so, there's not much we can do about it. It's a demand-driven market. China is buying coal for their electric needs and that's what's kicking up our coal (prices.) If these trends continue, our rates will have to increase."

AECI, of which KAMO is a part-owner, is working to meet the growing demand for power.

"They've invested in clean coal technology, removing pollutants to meet EPA requirements. There is a lot of research in progress in that area now.

Coal is one of our biggest resources – we have a 250 year supply – and it does burn cleaner, but there is still work to be done on the technology to make it burn cleaner," he says.

"I think we're going to have to explore the possibility of (building) nuclear plants. We'll have to have the participation of experts who build and operate those plants. And the govern-

ment will probably have to provide some incentives."

He goes on to say wind generation is growing as the construction of four new wind farms is in discussion. "Three will be in Missouri and one could be in Oklahoma, possibly Osage County. John Deere is building one in northwest Missouri and AECI is going to buy all that power for the next 20 years. Two to three percent of power is currently being generated by wind, and that's going to increase."

Long goes on to discuss the new gas-fired generation plant at Chouteau that will generate 1,140 megaWatts of power.

And the 345-kiloWatt line KAMO is building from Chouteau 100 miles thru Kansas into Missouri.

"The permit process through two

states takes a lot of time," he says. But because of large power lines such as this, he doesn't foresee any 'brown outs' such as California experienced a few years ago.

"Our concern is we're going to need 100 megaWatts of new generation per year. So far we're ahead of what we're using, but we're going to have to generate at least 2.5 percent more power per year to keep up with demand or we could be short in a few years."

It's obvious there are numerous complex challenges ahead for the electric utility industry. And they are going to require committed individuals, knowledgeable about the industry and dedicated to cooperatives and their members to keep the power coming.

Sounds like Long is just the man for the job.

New Substation to Power Oologah Area Growth

Weather Delays Progress

Growing pains can be uncomfortable. That's why we're building a new substation near Oologah.

"We're going to shift some of the load that's currently on the Keetonville Substation which feeds the Owasso area off Hwy. 169 between Collinsville and Oologah," says Randy Riddle, VVEC's manager of operations and technical services. "It will pick up the electric load between Oologah and Claremore on Hwy. 88," he adds. "It will help the reliability of service in the Oologah area."

The substation is located on old Hwy. 88, west of Lipes rodeo arena. Construction started about mid-April, and was scheduled to be finished June 1. "However, the rain and severe weather have delayed progress, so it will probably be about mid-June before construction is complete," says Riddle.

He says the transition to the new substation should be a smooth one. Electric service could be interrupted when change-over occurs, but the interruption will be brief.



From A Friend's Kitchen

How Sweet It Is

Whole Grilled Vidalia Onions

4 large Vidalia onions
Salt and pepper
Butter

Remove any dry skin and stem from onions. Working from the top, core the onions, leaving a cavity about 1 inch across and almost through to the bottom of the onion. Salt and pepper the onion cavities, then fill with butter.

Sprinkle onions all over with salt and pepper; wrap in foil, gathering at the top and twisting to seal. Cook in closed grill in for about 1 to 1 1/2 hours over medium indirect coals. Open foil 10 minutes before serving and leave on the grill for more smoked flavor.

Onion Muffuletta Sandwich

1 cup chopped Vidalia onion
1/2 cup drained small Spanish pimiento-stuffed green olives
1/4 cup olive oil (preferably extra-virgin)
1/4 cup sliced fresh basil or 1 tablespoon dried
2 Tbsp. drained capers
1 Tbsp. red wine vinegar
1 tsp. chopped fresh oregano or 1/2 teaspoon dried
1 24-inch long French or sourdough baguette, split lengthwise
12 ounces assorted sliced deli meats and cheeses (such as ham, mortadella, salami, provolone cheese and mozzarella cheese)

Combine first 7 ingredients in processor and chop finely. Transfer to bowl.

Let stand 1 hour at room temperature.

Spread 1/2 cup muffuletta relish over each cut side of bread. Place meats and cheeses on bottom half of bread. Cover with top half of bread. Cut diagonally into 4 sandwiches.

Yield: 4 sandwiches

As I traveled through Skiatook the other day, I noticed a handwritten sign advertising Vidalia onions, and I thought of my Dad.

I'm not much of an onion fan and he always teased me about that, saying when I 'grew up' and my tastes 'matured' I would certainly like onions.

For those of you whose tastes have already matured, I'm including a couple of recipes spotlighting Vidalias, which are supposed to be sweet onions, and grow only in a region of Georgia.

The sale of Vidalia onions is a fund-raiser for area Shriners. A portion of the money they raise is used to help transport sick children and their families to Shrine hospitals across the country. The Shriners believe a lack of funding should not prohibit those children from getting much needed, often live-saving, medical treatment.

I know this because my onion-loving dad – with mature tastes – was a Shriner. If you're blessed enough to have your dad this Father's Day, then give him a hug...no matter how he feels about onions.

In the May issue of Power Circuit, I accidentally left out three ingredients in the Baked Blueberry French Toast. They are 3 cups of milk, 1/4 cup of brown sugar, and 4 tsp. of butter. I apologize for the omission.

Kay Rabbitt-Brower
Power Circuit Editor

Everything Goes

Rear window for 1995 Jeep Wrangler w/hard top, 381-2113.

Magic Chef microwave w/turntable, 1,100-Watt, new, still in box, \$60; 2003 Kenmore chest freezer, 19.9 cu. ft., EC, 371-3459.

King-size soft-sided waterbed mattress & liner, w/heater, \$50; horse pictures & velvet horse throw, \$30; IBM electric typewriter, \$20, 381-2113.

Above-ground pool, 18', w/steps, pump & sand filter, \$500, 371-3504.

Slide-in camper for full-size pickup, w/AC, EC, \$750, 283-8001.

Wood-burning stove, Hearthstone Mansfield w/soap stone & blk. metal exterior, w/blower kit, used 3 winters, EC, \$2,250; set of 4 radial tires, 235/75 R-15 Cooper extra load tires, matching set, good tread, \$125, 283-2050.

Horse hay – pure, clean bluestem, barn-stored, 1,000 lb. bales, \$30/bale, can deliver, 724-4674.

Dog crate w/side locks & grate, 400-lb. size, EC, \$60, 381-2113.

Power House 300-lb. weight set w/pulley tower, bench & prayer bench, EC, \$300; Nordic Trac SL730 exercise bike, EC, \$325; Kenmore 22 cu. ft. side-by-side refrigerator/ice dispenser, free; Maytag extra large capacity heavy duty 2-sp. washer, needs water pump, free, 691-3683.

20-gal. terrarium for reptiles, frogs or turtles, \$25, 341-1662.

Make offer – carved oak, queen bed w/dresser & mirror, night stand, 342-3734.

Glidon camper shell w/sliding windows, fits long, wide bed, \$75, 695-7736.

Electric wheel chair, used 2 mos., \$2,200; Kohler porcelain double sink, extra large, color bisque, still in

box, \$200; used porcelain double sink, bisque, \$50, 341-2827.

Shell camper for mid-80s Toyota long bed, GC, \$195, 371-0931.

9 double-pane windows, airspace between glass, 44"x58", w/wood frames, made for greenhouse, \$200 OBO, 535-2994.

Hay – big, rnd. bales, bluestem/little bluestem mix, 468-2213.

Built-in GE appliances all in GC – wall oven, \$100; dishwasher, \$100; ceramic cooktop & hood, \$100; Whirlpool washer & dryer, 3 yrs. old, \$150; 3-yr-old sofa, \$125; matching living room, dining room & breakfast nook chandelier, \$100/set; 42 kitchen cabinet knobs, \$20; ceiling fan, \$25, 396-9886.

Kenmore upright frost-free freezer, 19.47 cu. ft., \$100 OBO, 342-3959.

2005 Gibson guitar & case, Les Paul studio model, \$995, 341-4439.

Four pieces Samsonite hard-side luggage, 3 pieces have wheels, navy blue, EC, \$99, 273-1915.

Pellet stove fireplace insert, 18"x23"x22", \$1,000; Century Tonneau pickup bed cover, silver, fits Ford short bed, \$400, 275-4682.

Oak futon w/2 bottom drawers & 4 pillows, \$225; 3-cushion settee/couch, floral pattern, \$75; oak captains bed, 4 drawers & cubby hole, no mattress, \$200; enclosed car hauler/trailer, GC, \$6,200; Yankee great Mickey Mantle autographed baseball w/letter of authenticity, \$750, 341-6755.

Jacuzzi whirlpool bathtub, 724-3396.

Doughboy 4'x16' metal side swimming pool w/pump & sand filter, will need new liner, \$500, 371-3713.

Used telephone poles, 371-4682.

Maytag above range microwave oven w/hood vent, biscuit color, 2.5 yrs. old, EC, \$100; cut & bagged apple-

wood, great for grilling & smoking, \$4/bag; wood night stand, 2 drawers w/shelf, glass top, \$25; complete current C'ville elementary cheerleading uniform, EC, \$25, 371-0315.

Fresh goat milk, goat cheese & eggs, 396-3192.

Chair/stair lift, attaches to left side of staircase, EC, \$2,000, 371-0636.

Flexible Flyer spring horse, EC, \$25; solid maple kitchen table, oval w/1 leaf & 4 chairs, \$75, 371-6414.

Hay – 2008 sq. & rnd. bales; taking orders for summer 2008 sq. & rnd. bales in the C'ville & Talala areas, 275-8053.

English saddle, 17", \$150, 283-1689.

Hay – sq. bales, \$4/bale; perennial plants, 504-6264.

Party King tailgate barbecue grill, model MVP 9200, never used, \$500 OBO, 607-4441.

Hay – big, rnd. bales of prairie or mixed grasses, 396-2206.

Iron wagon wheels, 6 @ \$25 ea., 335-2337, 397-4749.

LEER camper shell, fits full-size pickup bed, GC, \$375, 341-6507.

Hay – 4'x6' bales, about 1,200 lbs. net wrapped, prairie grass, baled Aug. 2007, \$16, delivery available, 275-8113, 342-8010.

Aluminum Mag wheels w/caps, 6-hole, \$140; aluminum Mag wheels w/tires, 235-75 R15, \$125; 215-65 R 15 tire, \$15; 1950s Stevens double-barrel side X 12 gauge shotgun, GC, Remington Magnum 12 gauge pump 3/4" or 3" chamber, \$300 ea., 536-4215.

Peachtree exterior door, 1 year old, 1/2 lite, \$100; 50-gal. 1 yr. old electric water heater, \$50; 14" Craftsman chainsaw, needs carburetor work, \$25; 7 Cutterhammer 20-amp breakers, \$4 ea.; 1 Cutterhammer 30-amp breaker, \$6; fiberglass shower base, \$20; Hoover

Floor Mate, \$15, 274-8774, 688-6949.

All leather roping saddle, 16", EC, \$600, 536-2124.

Late model GM race car cage for dirt track racing, \$150; boys 20" bike, \$20; girls 20" bike, \$25, 639-6823.

Hay – lg. rnd. & sm. sq. bales, furniture-moving dolly, \$25; Slalom water ski & case, \$150; trick water skis, \$50; Shorty small wetsuit, \$35; ski tube & rope, \$25; lg. ski vest, \$25; trolling motor battery chargers, 283-2777.

Small desk, dark wood veneer, 48"x20"x30", 6 drawers, GC, \$40 OBO, 341-6280.

Four factory Chevy 17" chrome wheels, 6-hole w/3 tires, 18K miles, EC, \$300, 273-2127.

1992-1996 Ford chrome grill assembly, \$50, 706-1925.

Cars & Trucks

2004 Ford F-250, 6 sp., nice work truck, 287-2911.

2006 Ford Mustang, V6, lime green, 10,500 miles, full-loaded, 30+ miles on hwy., EC, \$18,000, 341-3600, 851-2601.

2006 GMC Sierra 1500 SLE pickup, reg. cab, 5.3L, V8, 1/2-ton, 12,450 miles, still under warranty, \$15,000, (620) 251-1602.

1994 Silverado, ext. cab, EC, 371-3496.

1975 MG Midget convertible, original paint, new carpet, wire wheels, new brakes, relented tires, EC, \$4,500; 1973 Cushman Truckster, full cab w/doors, new windshield, upholstery & paint, high speed rear axle, good title & tags, \$2,150, 272-0341.

2001 Suburban LT, loaded, 106K miles, EC, \$10,500 OBO, 697-6082.

1995 Chevy Silverado 1-ton truck, 11' flatbed w/dump, 350 w/5-sp. manual, cruise, tilt, owner-driven, GC, 124K

miles, \$5,500, 272-3105.

2001 Pontiac Grand Am GT, V6, 3400 engine, coupe, 2 dr., sun roof, \$6,500; 2003 Ford F-150, V8, \$12,500, 255-6036, (620) 870-8631.

1984 Chevy C-10, LWB, 305/350, runs but needs work, \$1,200 OBO, 638-7091.

1998 Chevy, ext. cab, 1/2-ton, 4x4, short bed; 1998 Chevy, ext. cab, 3/4-ton, 4x4, long bed, 857-6626.

1992 Ford Ranger, 2 WD, new plugs, good tires, runs great, 24 mpg, 130K miles, ex. work truck, \$1,800, 698-9678.

1878 CJ-7, V8, auto, auto 4x4, solid doors, cloth top, chrome wheels, GC, \$3,850, 261-1484.

1990 Super Coupe Thunderbird, 1989 complete Super Coupe parts car, \$2,750 for both, 815-2685, 534-1750.

1998 Chevy Tahoe 4x4, 724-3396.

2003 Dodge long bed pickup, w/rear bumper & receiver hitch, GC, \$500; 1978 Datsun 4 cyl. w/tool bed, good gas mileage, \$1,000, 335-2337, 397-4749.

1979 Oldsmobile Cutlass Supreme, like new inside & out, 16K miles, \$5,500, 371-3982, 260-1201.

2002 Ford Escort ZX2, AT, AC, CC, PM, TW, about 33 mpg., \$2,995, 342-8010.

2000 Chevy Impala, new tires & brakes, 110K miles, EC, \$5,400, 639-6823.

1984 CJ-7, \$500; 2-ton dump truck w/jim poles, \$500, 284-9843.

2000 Chevy Impala, new tires, EC, \$5,500; 1988 Nissan pickup, runs good, rusty, \$1,000, 639-6823.

1993 Lincoln Towncar, GC, 443-2096.

1993 Ford, ext. cab, re-built 5.8 engine, needs trans. work, \$1,200, 232-8665.

1959 Chevy Apache pickup, short bed w/factory

utility tool boxes, complete w/ title, needs restoration, \$700, 342-4114, 740-5806.

1971 F-250 Ranger, starts & runs, needs some work, C6 auto., \$1,425, 706-1925.

Equipment

Dump bed, 13', 10 yd., solid hinge included, \$600, 396-0897 after 6 p.m.

1985 Ford Industrial tractor model 445, w/large front loader & box blade w/Cannon kit for 4-way box blade, New motor, interior hydraulic seals, water and oil pumps, power steering boxes, battery & injection pump, good rubber, \$9,500, 740-4411.

Gooseneck flatbed trailer, 24', good floor, tires & brakes, 504-4830.

New Schaben Industries 55-gal. 3-pt. sprayer w/boom, \$800, 288-7093.

John Deere small wire baler & hay rake, 273-3154.

110 air compressor, \$75 OBO, 371-4682.

Murray riding mower, 46" deck, 18 hp Briggs twin cyl. motor, \$400, 341-8257.

Mahindra 3510 tractor w/ML112 front loader, less than 200 hrs. use, manual available, GC, \$15,000 OBO, 396-7437, 214-1664.

1953 Ford tractor, runs good, \$2,800 OBO, 688-6334.

Four 9'x18" culverts, \$100 for all; 4 old Briggs & Stratton engines, make offer, 273-2338.

2007 Artic Cat 4x4 500 w/winch, 857-6626.

Coleman generator, 5,500-Watt, 10 Briggs & Stratton, 40 hrs. use, \$550, 275-4682.

Three-ton heavy duty engine hoist, can be dismantled for storage or transport, \$140, 342-4114, 740-5806.

New 2H bumper pull trailer, heavy duty tires, new floor in tack, good floor, thick

rubber mats, can haul 2 17 hands high horses, \$1,500, 855-6794.

Utility trailers/lowboy, \$1,400 and up; truck racks, \$100 and up, 371-2316.

225 AC Lincoln welder, \$140, 536-4215.

Square baler, \$2,500; 14' utility trailer, \$250; chain hoist lift trailer, \$500; 2 sq. baler elevators, \$250, 284-9843.

Ford tractor Jubilee series w/5' JD brush hog, Stihl chain saw w/case & extra chains, 443-2096.

42" Craftsman rider w/ new battery & blades, fresh tune, EC, \$425; 30" Murray mower, new battery, blades & ignition coil, fresh tune, \$350, 639-6823.

1994 Wrangler gooseneck stock trailer, 20'x6', original wood floor w/rubber mats, used very little, \$2,850, 693-3839.

Older band saw, table saw, drill press, lg. bolt sander, \$200 for all, 342-3530.

John Deere 4020 tractor, GC, \$10,500, 335-2337, 397-4749.

Roping chute for calves, \$125; hay spear for front end loader, \$175, 261-1484.

36" commercial John Deere walk behind, 12/5 Command Pro Kohler, \$750 OBO, 815-2685, 534-2750.

1997 Hart aluminum 4-slant horse trailer w/4 saddle racks, mats, vents & insulated roof, \$10,000, 639-1053.

1973 Massey Ferguson tractor, 165 diesel, 3-pt, 4,100 hrs., runs good, EC, \$6,000, 468-2367, 440-9700.

Genuine Crump show harness, black w/red trim, EC, \$1,500 or trade, 283-1689.

Craftsman 8.5 horsepower chipper/shredder, \$175, 691-3683.

4,000-lb. Hydrohoist, H model, complete w/installation hardware & 1 yr. old pump, \$1,200, 266-2959.

New 32' hay wagon, tandem-axle gooseneck, w/brakes, self-dumping, 371-9264.

Three riding lawn mowers, all cheap, 284-9843.

Livestock

1 flock Guinea fowl, 10 birds, \$100, delivery available, 434-6632.

Brangus bulls, fertility tested, very gentle, also nice replacement heifers, delivery available, 695-2357.

Swans, peacocks, Guineas, chicks, Bantams, geese & ducks, 288-6543.

Registered Finnsheep, available early June, 519-4140.

Baby barnyard Bantam Frizzle chicks, varying ages, call for quote, 273-8119.

AQHA brood mare w/red roan colt at side, (handled since birth), \$1,000 or trade, 283-1689.

Kid goats, Nubian & Saanen, 396-3192.

Beautiful 6-yr.-old APHA tobiano mare, 15.3 hands high, running 2-3D times, some cattle work, hauls good, \$3,500, 335-2337, 440-1237.

Registered Paint-Pinto, 2-yr.-old stud colt, black & white, \$2,500, 536-2124.

Pygmy goats, \$40 - females, \$25 - males, 698-9678.

Two baby mini Lamanch goats, 1 buck, 1 wether, \$35 ea., 207-6279.

Pinto gelding, 4 yrs. old, great barrel or roping prospect, 13-yr.-old APHA solid gray mare, broke but not ridden lately, hand-tooled hereford saddle, & all tack, \$1,600 for all, 948-5566.

5 yr. old POA pony mare w/4-mos.-old bay app POA stud colt, \$350; 17 yr. old mare, \$350; 12 yr. old AQHA paint gelding, \$550; 2 yr. old AQHA filly, \$550, 706-1931.

Pets

Chihuahuas, long coats & Chinese crested, 371-2885.

AKC Great Pyrenees puppies, working parents on site, some adults available, 519-4140.

Beagle puppies, born 4-19-08, shots & wormed, NKC registered, \$150, 344-2967.

Purebred Basset puppies, ready last week of June, prices vary; Dogue de Bordeaux available also, 724-1932.

German Shepherd/Mastiff, 11 mos. old, female, red/tan, not spayed, 698-5405.

AKC French Bulldog puppies, champion sire & dam, trained & untrained, www.trainK9.com, 274-8774.

Registered female Maltese puppy, \$450, 342-3530.

Registered male Bluetick, Uchtmans breed, \$200, reg. male Walker, 4 yrs. old, \$150, 261-9657.

AKC Parson (Jack) Rus-

sell pups, champion parents on site, \$400, 396-1502.

AKC & ASCA reg. Australian Shepherds, www.fifteenacrefarms.com, 706-1931.

Real Estate

3 BDR, 2 BA, 1.5 story brick home on 40 acres in Nowata Co., \$239,000, 273-8094.

40 acres w/3 BDR, 2 BA home, fenced, pond, outbuildings, barn, 1 car garage, arena, Hwy. 169 toward Nowata, then rd. 28, \$300,000, 273-0631.

5+ acres, 2,300+ sq. ft., 4 BDR, 2.5 BA home w/lg. game room, 2.5 car garage, 30'x40' barn w/water & electric, partial concrete floor for tack room & shop area, 6'x8' in-ground storm shelter, Oologah schools, \$215,000, 371-5475, 344-0116.

Hunting land for deer, quail, turkey, ducks, live creek, good cattle grazing on some fescue, bluestem, & native grass in Nowata Co., 273-1627.

3 BDR, 2 BA, 1,832 sq. ft. ranch-style home on 5 acres, 2 yrs. old, all metal outside, barns, cross fenced, C'ville area, \$162,000, 798-2657, 798-5790.

5 acres, Oologah schools, NS 408 & Rabbs Rd., 1.5 miles off Hwy. 169, \$55,000 OBO, 343-7422.

Charming 2/1/2 home on 25 acres, carport, fenced, pond, trees, cross country hilltop view, lg. unfinished building for potential income property, 30 miles north of Tulsa on Hwy. 11, \$63,000, 847-3785.

LEASE - 16'x80' mobile home, 4 BDR, 2 BA, central H&A, all appliances, 855-9913.

RENT - pasture, standing hay for sale, 536-4215.

Timeshare condo 3 miles from Disney World in FL, 2 BDR, sleeps 6, week after Thanksgiving, \$5,000, 371-6414.

40 acres 5 miles west of Oologah on 4050 Rd., between 390 & 400 Rds., 371-5211, 698-6214.

House in Nowata w/2 lots, 1,000 sq. ft, 3 BDR, 2 BA, \$25,000 as is, 468-2367, 440-9700.

2.5 acres, 2.5 miles east of Hwy. 169 on 106th St. N. in Owasso, utilities, no trailers, \$95,000, 232-8665.

Colonial 2-story house, 3,000 sq. ft., 2-stall garage, 1.5 acre yard, 5 BDR, 3 BA, new carpet, Hwy. 20 west, Claremore, \$199,900, 283-2777.

MAKE OFFER - Refurbished mobile home, 342-1321, 406-7000.

10 acres, and 1/3 acre (narrow strip), both in Mays Co. near Locust Grove, 10 acres, \$11,576; 1/3 acre, \$3,819, 671-0122, 371-7227.

RVs & Boats

1990 Hurricane deck boat w/trailer, inboard/outboard 350 V8, cracked hull, sell for parts, 724-2518.

1972 Terry bass boat, 50 hp Evinrude, trolling motor, locator, \$1,650, 341-4458.

2002 Trail Bay travel trailer, 31' long w/slide out, 1 owner, EC, \$12,500, 234-4059.

1962 16' Glastron bass boat w/trailer, trolling motor & 1975 75 hp Johnson motor, \$800; 1987 20' Monarck pontoon boat w/trailer, trolling motor & 1979 70 hp Mercury engine, \$4,950 OBO, 242-3172, 640-9714.

1973 26' Continental Lifetime motor home, new tires & awning, GC, \$2,995, 371-4168.

1999 Yamaha Bear-tracker 250 4-wheeler, EC, \$1,800, 693-3839.

1990 Holiday Alumna-Lite 32' pull-type trailer, very clean, \$4,990, 431-3272.

Beautiful 1999 Yamaha Royal Star Venture touring bike, \$7,450; 2003 Honda

CRF 150 dirt bike, EC, \$1,500 OBO, 697-6112.

1990 Coachman motor home, \$7,500; 1997 Jayco tent trailer, \$2,500, 284-9843.

2006 Honda motorcycle, VFR 800 Interceptor, 3K miles, used 1 season, original tires, chain & sprockets, \$7,000, 341-6280.

1997 Suzuki DS80, owners manual, 4-stroke, well maintained w/good tires, clean, EC, \$850, 371-0315.

2003 Artic Cat 90 4-wheeler, 1 owner, starts 1st time, garage-kept, never been raced, no body damage, EC, \$1,500, 261-1484.

2004 Honda 400 EX, Nerf bars, Yoshimara pipe & skid plates, \$3,800 OBO, 639-2344.

Escaper 34' 5th-wheel, 4 new 10-ply tires, 371-3410.

2006 12' Portaboat, folds to 4" flat, complete w/trailer & all accessories, 5 hp Nissan outboard motor, \$1,750 for boat, 272-5074.

Services

Custom home designs, 28 yrs. experience, computer-aided, 30¢ per sq. ft., 371-4065.

Professional full body waxing, esthetician services including facials, body treatments, paraffin dips, 343-1868.

RV service & repair, service AC units for a cool summer, 704-8329.

Wedding cakes prepared fast in Claremore, Catoosa & Owasso areas, designed w/a minimum 3 day notice, 720-4939.

Housecleaning, free estimates, call Cindy at 519-4140.

Bee swarm bugging you? Call Jim at 371-9502.

French & area drains, excavation & grading, 938-2161.

Classified Ads

PLEASE NOTE: Deadline for all ads is the **10th of each month**. Ads will be accepted *in writing only* and are a free service to VVEC members only. Send them to the attention of *Power Circuit* Editor, P. O. Box 219, Collinsville, OK 74021.

Your account number, name, address, and a phone number is required on all ads.

As many ads as space allows will be included in each issue. VVEC reserves the right to delete or shorten items or descriptions.

Level homes around Foyil, Chelsea & Claremore, 341-6856.

Loving, caring, trust-worthy caregiver, w/references, call Donna at 813-5813.

Brush hogging & finish mowing, 371-8911, 724-1324.

Brush hogging, mowing, dirt work, box blade & front end loader, very reasonable rates, 371-3982, 260-1201.

Hay hauling, sq. & rnd. livestock hauling in & out of state, 32' trailers, 275-8053.

Brick & rock work, new or repair, mailboxes, settling, cracks, flower beds, etc., 35 yrs. experience, 282-9927.

Brush hog, gravel work, Ditch Witch, chain saw sharpening, 639-6823.

Brick mason, repair work, fireplace repair, mailboxes, all mason work, reasonable rates, 697-6112.

Affordable commercial/residential bucket, blade, brush hog, mowing service, 695-1943.

Horse boarding, \$3/day, bermuda grass, clean pond water, rolling meadows, farther on call; will haul off old tractors for free, 536-4215.

Stump grinding, \$36 covers up to 18", 694-2297, 342-8866.

Lawn mowing, brush hogging, reasonable rates, free estimates, 408-5040, 371-5901.

Above ground safe rooms, exceed FEMA specs, 629-2707.

Learn to protect your family and yourself; concealed gun carry classes, 694-2250.

Carpet installation & repair, vinyl, faux wood, 343-1845.

Buy or sell Avon, 637-7621.

Auction service, fund-raising, estate, farm & liquidation, consignment auction 2nd Sat. of each month, 5 miles west of Oologah, 371-

5211, 698-6214.

Will haul off old riding lawn mowers, motorcycles, 4-wheelers, aluminum & steel for metal, also boats & some cars & pickups w/o title, 272-3362.

Kevin's Lawn Care, 346-4427.

Diesel & auto diagnostics & repair, heavy equipment, trucks, tractors, hydraulics, roadside assistance, pickup & delivery available, 706-1925.

Wanted

Small older travel trailer, ok if it needs work, 694-1985.

Offset disk, 6' or 8' wide, prefer an International, must be in serviceable condition & reasonable, 333-3974.

Aloe Vera plant or plants, 3 yrs. old or older, willing to pay what they are worth, 342-2700.

Old rhinestone jewelry, 536-4215.

Ashley or King-type wood stove w/bottom ash tray, 341-3272.

Lodi or transparent apples, 443-2096.

Pint and quart canning jars, 341-6507.

Stock panels, bottle baby goats, Buffalo calf, up to 6 mos. old, Jenny donkey, 283-1689.

One Phone Number, Please

Beginning with the July issue of Power Circuit, we are going to print only one phone number with each classified ad.

"The classifieds are a very popular part of our newsletter," says Power Circuit Editor Kay Rabbitt-Brower. "And we try to include as many ads each

News You can Use.....

WATER HEATER RULES

New standards for water heaters could save consumers about \$780 million and prevent emissions of 4.2 million tons of carbon dioxide, according to the U. S. Department of Energy. The criteria separate residential water heaters into five categories under the Energy Star program and go into effect next January, with a second, stricter phase slated for September 2010. Water heating represents about 17 percent of national residential energy consumption, behind only heating and cooling systems, and kitchen appliance use.

MILITARY PLUGS INTO CFLS

It's not just co-ops that are encouraging use of compact fluorescent bulbs. Operation Change Out is a joint effort of the pentagon and the Department of Energy to replace incandescent

bulbs in on-base housing with energy efficient CFLs. Camp Lejeune, the Marine Corps base in North Carolina, got a head start, and on Earth Day, April 22, Energy Secretary Samuel Bodman helped change the last of its 17,500 bulbs.

"By using energy wisely the military can help us access the cheapest and cleanest source of new energy – the energy we waste each and every day," Bodman said.

ITS A GAS

Gasoline costs more, but that doesn't mean we're using more. In fact, Americans are consuming less gas, in part because of high prices, the Energy Information Administration reported. During the second half of 2007, consumption declined by 0.1 percent, and is about 0.6 percent lower for the first three months of 2008, compared with 2007.

month as we can.

"Members frequently include as many as two or three contact numbers. But we feel because almost everyone has voice mail or an answering machine, one phone number should be enough to make it easy for prospective buyers to contact members listing items in the

classified."

Rabbitt-Brower says if more than one number is included, only the first one will be printed.

"Limiting ads to just one phone number will free up more space for us to include more ads," she explains.

What to Get Dad for

Father's Day



Golf clubs, power tools and coffee mugs that say 'World's Greatest Dad' are nice, but sometimes predictable, gifts for Dad on Father's Day.

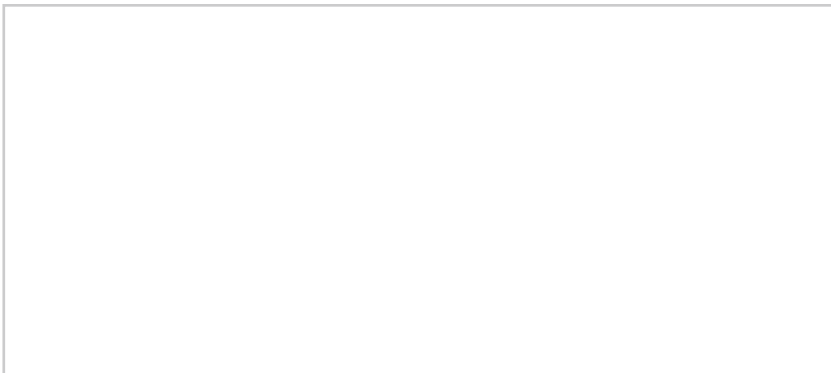
So, get him something he'll enjoy!

Visit us and check out our numerous electric grills. We have several models Dad is sure to like. They come in different colors, sizes and prices. They are all gifts he can enjoy for years to come.



**Come by the Co-op Store and shop for Dad or your Grad.
We're here from 7:30 a.m. to 4 p.m.,
Monday through Friday.**

Father's Day is Sunday, June 15



Brush Crew Locations

3 crews	Owasso
1 crew	Watove
1 crew	S. Coffeyville