

[Know Where to Use Your Co-op Connections® Card? p. 3](#)

Two Programs Help with Severe Weather

You don't have to be a life-long Oklahoman to know the weather here runs from mild and pleasant to uncomfortable and violent, sometimes in just a few hours. Although there isn't much that can be done about Mother Nature, VVEC offers two programs to help prepare you for severe weather and the outages that sometimes occur afterward.

The iMap Alert service provides weather forecasts and severe weather alerts for your specific area and are delivered right to your E-mail in-box or cell phone. Now you can be notified when bad weather is heading your way and can plan accordingly.

The free iMap Alert features include daily 7-day forecast E-mails that are delivered to one E-mail in-box every day before dawn, if you select that option.

You will also receive emergency alerts from the National Weather Service via E-mail or text message for your specific area 24-hours a day. These are sent to the E-mail address or cell phone you choose. This tool also serves as a valuable communications tool that allows us to send you emergency and pertinent information if necessary.

Sign up today to begin participating in this valuable weather-alerting service. It's quick, easy and free. Just go to www.vvec.com, and click on the iMapAlert icon. You will be asked to fill out your name, address, E-mail address or cell phone number, and the name of the co-op that serves you.

Mother Nature's mood swings can result in a loss of members' electric service. When that happens, the co-op starts receiving calls from members wanting to report the outage.

The CallCapture™ program will gather information based on the member's phone number, and enters the outage into the co-op's outage system.

If dispatchers are handling a large volume of calls, the outage system will transfer the call to CallCapture™, which gathers the member's information and automatically enters the outage.

"CallCapture™ will also give members information about the outage if dispatchers have been given information by line crews. The member can leave information in the form of a voice mail, if they have pertinent information they would like to leave about the outage," says Randy Riddle, VVEC manager of operations and technical services.

Riddle goes on to say members will need to provide their phone numbers to the co-op so they can be added to the database.

"We're asking members to give us their phone numbers, both for land lines and cell phones that they might use to call us to report outages. The CallCapture™ software searches the database to find the phone number the member is using to call us. Once it's found, the member's pertinent information will be entered into the outage management system. If the software doesn't recognize the number, then the member will have to give us their name, account number, address, etc."

Riddle says members can call the co-op at (918) 371-2584 and give their contact numbers to the customer service representatives.

Mark Your Calendars!
Annual Meeting is Saturday, October 23.

GREAT SUMMER MEMORIES

VVEC Board of Trustees

- District 1 - **Jim Brackett, 720-4531**
- District 2 - **Jack Bogart, 371-9587**
- District 3 - **Vernon Lewis, 341-5225**
- District 4 - **John Hibdon, 847-2320**
- District 5 - **Jimmy Lambert, 342-4662**
- District 6 - **Dennis Lenox, 396-1574**
- District 7 - **Charles Huerter, 333-3107**
- District 8 - **Ken Howard, 371-4833**
- District 9 - **Buddy McCarty, 272-5134 or 272-5364**

General Manager - Alice Houston

VVEC Headquarters
8901 E. 146th Street N., Collinsville

Mailing address
P.O. Box 219, Collinsville, OK 74021

Phone number
(918) 371-2584 or 1-800-870-5948

Office hours
7:30 a.m. to 4:00 p.m.,
Monday through Friday

Editor - Kay Rabbitt-Brower

VVEC offices will be closed
Monday, September 6 for the Labor Day holiday. Please call 371-2584 or 1-800-870-5948 to report an outage.

Summer Residential Rates

April through September usage,
May through October billing

Customer Charge \$20.00

Energy Charge

1st 2,000 kWh \$0.0801/kWh

Over 2,000 kWh \$0.0851/kWh

A power cost adjustment (PCA) will be applied to all bills when the actual cost of power purchased exceeds or is less than 55.993 mills per kWh.

In addition, a gross receipts tax of 2% of revenue will be included, plus additional taxes if applicable.



Touring famous sites in the nation's capitol, taking a sky-high ride in a bucket truck and climbing a utility pole, along with making new friends are just some of the memories four area young people made this summer on Youth Tour and at Energy Camp.

Kai Hodo and Mikay Elliott (left) spent a week in June touring Washington D.C.

with high school juniors representing other Oklahoma cooperatives.

They enjoyed touring such sites as the Viet Nam Wall, Arlington Cemetery, the Holocaust Museum and the Museum of Crime and Punishment, along with meeting Oklahoma Congressmen.

Eighth graders Bailey Jordan and Haley McFarland (right) spent four days at Canyon Camp near Hinton, learning about electric cooperatives and developing leadership skills through fun activities.

They enjoyed the Coke and Candy Co-op, and the ropes leadership course.

All four students attend Owasso schools.



What to do if Your Power Goes Off

1. Check your fuses or circuit breakers. Every service is different. You may have fuses or circuit breakers in your house, on the side of your house, under your meter, or all three places. Check to see if your neighbors have electricity.
2. Call the Co-op at 371-2584, or 1-800-870-5948 if the call is long distance for you. Have your account number, name as it appears on the account, and address handy to give to the dispatcher. If you should get a recording, please don't hang up; leave your information. It will be retrieved and given to the correct department. Every message is answered.



Power Circuit is published monthly by Verdigris Valley Electric Cooperative, Collinsville, Oklahoma (ISSN 10884378) for its members in Tulsa, Rogers, Washington, Nowata and Osage counties. Periodical postage paid at Tulsa, Oklahoma and other additional mailing offices. Subscription price is \$0.21 per month. POSTMASTER - send address changes to Power Circuit, P.O. Box 219, Collinsville, OK 74021.

VOLUME 69 • NUMBER 8 • AUGUST 2010

Benefits

Use Your Co-op Connections Card
at these Businesses for Specials

Newest

Chapman Auto, Skiatook

10% discount

Dorothy's Flowers, Claremore

10% off local delivery orders & in-store purchases (not use with other coupons or offers)

Mail This! Copy That! Owasso

10% off any order, excluding USPS

Pat Knotts, Mary Kay Beauty Consultant, Nowata

10% discount, free gift w/\$40 net purchase

Red Barn Quilting, Bartlesville

10% off any fabric

Shreve Truck & Equipment Sales, Barnsdall

\$100 off truck purchase

Silver Dollar Cafe, Collinsville

Free soft drink w/purchase of regular priced dinner entree

Superstar Trophies, T-Shirts & More, Dewey

10% off all orders

The Computer Guy, Nowata

10% off computer repair

Trummel Drug & Gift, Oologah

10% off gifts (gift dept. only)

Weeze's Cafe Downtown Bartlesville, Bartlesville

5% off breakfast or lunch

Any Occasion Limousine Co., Bartlesville

Free party decorations inside limo, \$30 value

ANZ Signs & Shirts, Collinsville

\$10 off 1,000 business cards

Ashlock Chiropractic, Owasso

Exam & X-Rays at no charge

Charlotte's Country Spirits, Skiatook

10% off total purchase

Church's Chicken, Owasso

10% off regular menu items, excluding monthly specials

Cliff's Flooring and Windows, Bartlesville

5% off, not combined with other offers

Dandee Tax Service, Oologah,

10% off all tax preparation services

Drake Chiropractic, Owasso

30% discount on any out-of-pocket expenses

Earnest Heat & Air, Bartlesville

5% off new or replacement Geothermal heat pumps

Fireplaces Plus of Oklahoma, Dewey

10% off

Flowerland, Bartlesville

5% off any order \$30 or more, excludes wire orders

Flowerland, Too, Bartlesville

5% off any order \$30 or more, excludes wire orders

Gail's Hairstyling and Spa, Bartlesville

20% off Redken Haircare products

McFerron Quality Meats, Nowata

5% off purchases paid by cash/check, does not apply to custom orders

Kids Academy, Collinsville

\$50 off enrollment fees

Accurate Automotive LLC, Bartlesville

10% off any repair (max total discount \$50)

Cartridge World, Owasso

\$2.00 off any refilled cartridge. Limit 1-per customer per day

Cheryl's Digital Keepsakes, Bartlesville

2 free copies of any complete project

Mark Close Roofing & Construction, Ramona

4 free low-profile vents with the purchase of a new roof or \$25.00 off roof repair

Country Inn Bed & Breakfast, Claremore

20% off your stay weekdays (no holidays or special events), 10% off weekends (no holidays or special events)

Country Inn Catering, Claremore

25 meals or more, receive 15% off a full \$10.00 meal

David's Electrical Service, Owasso

10% off all service calls

Dry Cleaning Station, Skiatook

15% off comforters laundered or dry cleaned

John E. Koller Jewelry Designs, Owasso

\$2.00 watch battery (\$10.00 value)

Lenox Mini Storage, Skiatook

10% discount

Linger Longer Antiques & Old Fashion Soda Fountain, Dewey

20% off any treat from the Soda Fountain

The Men's Shop, Claremore

25% off regular price item, any item at regular price

My Doll Castle, Claremore

10% off any doll not already on sale

Neis Furniture, Owasso

5% discount - Not valid on sale items or additional discounts

Owasso Fitness Zone, Inc., Owasso

No joining fee or contract, monthly draft single \$35.81, family \$59.68.

Perfixx Painting, Owasso

15% off paint

Reynolds Funeral Service, Collinsville:

7% off of any service or pre-planning contract

Robertson Tire Co., Owasso

10% Off

Route 66 RVs, Claremore

10% off in-stock parts, 10% off RV rental base rate

Standridge Clinic, Owasso

\$50.00 off first visit

Tate Boys Tire & Service, Bartlesville

10% off service & 5% off tire purchase

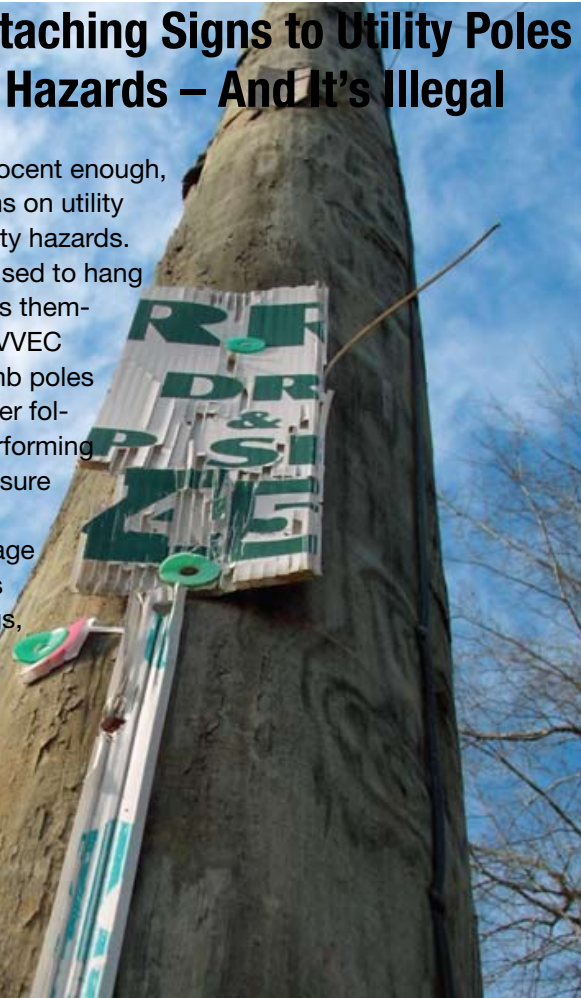
Waterfront Frame & Art, Claremore

10% on custom picture framing

Post No Bills: Attaching Signs to Utility Poles Presents Safety Hazards – And It's Illegal

Although seemingly innocent enough, putting signs or other items on utility poles creates serious safety hazards. Staples, nails, and tacks used to hang signs – as well as the signs themselves – pose dangers to VVEC lineworkers who must climb poles when either restoring power following storms or while performing routine maintenance to ensure system reliability.

Campaign posters, garage sale signs or other objects (birdhouses, balloons, flags, and even basketball nets) can create dangerous obstacles. Also, nails and tacks left behind from signs can snag utility workers' boots or puncture safety clothing, making lineworkers vulnerable to slipping or even electrocution.



Dim Your Lights to Save Energy

If you're looking for a quick way to save on your electricity bill, install a dimmer switch. Dimmer switches reduce a lamp's wattage, which can save you money while giving the room a cozy feel.

If you have already switched to energy-efficient compact fluorescent light bulbs, choose those that are labeled as compatible with dimmer switches. It's not safe to use an incompatible CFL with a dimmer, even if you keep the dimmer on full light.

And be aware that not all CFLs can be dimmed. Read the package label.

You'll find dimmer switches at any hardware or home store, and they're easy to install. Before you start, turn off the circuit breaker to that switch and use a voltage tester to be sure the circuit is dead.



RECIPE

Tri-Berry Jam

4 cups fresh or frozen blueberries
 2-1/2 cups fresh or frozen red raspberries
 2-1/2 cups fresh or frozen strawberries
 1/4 cup bottled lemon juice
 2 pkgs. (1-3/4 oz. each) powdered fruit pectin
 11 cups sugar

Combine the berries and lemon juice in a stock pot; crush fruit slightly. Stir in pectin. Bring to a full rolling boil over high heat, stirring constantly. Stir in sugar; return to a full rolling boil. Boil 1 minute, stirring constantly.

Remove from the heat; skim off any foam. Carefully ladle hot mixture into hot pint jars, leaving 1/4-in. headspace. Remove air bubbles; wipe rims and adjust lids. Process for 10 minutes in a boiling-water canner.

YIELD: About 6 pints.